



## **On-line PICASSO PROJECT**

**Comprehensive Catalogue Raisonné  
Prof. Dr. Enrique Mallen**

**1951**



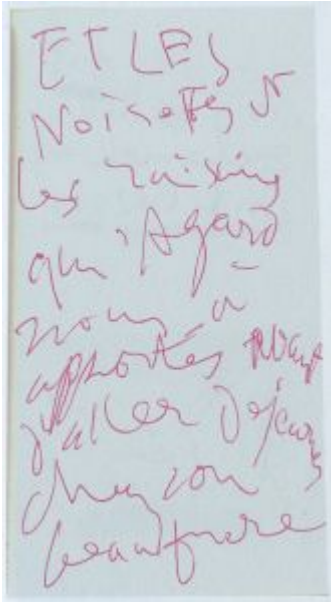
**L'arrosoir fleuri.** Vallauris. [February/1943~1944] 1951~1953.  
Plaster, metal, wood. 85,5 x 42 x 38 cm. Musée Picasso, Paris.  
Dation 1979.

**OPP.51:471**; MPP:329; WS:239.I; MP.85:391; PA.21e\*:395;  
PA.79a\*:301

**Yan minou.** Vallauris. 1-January/1951. Red ink on paper. S/U.  
Musée Picasso, Paris.

**OPP.51:246**; AM.08:116p

ETL  
Monsieur  
et Madame  
Kramie  
avec la  
boite de  
gateaux  
pour  
trouver de  
cames



**Yan minou.** Vallauris. 1-January/1951. Red ink on paper. S/U. Musée Picasso, Paris.

**OPP.51:247**; AM.08:117p

**Paloma.** Vallauris. January/1951. Oil on canvas.  
27,3 x 22,2 cm. Private collection.

**OPP.51:077**; PP.51:002; HK.65:139p; WW.91:481p





**Portrait de famille.** Vallauris. Early/1951. Blue ballpoint pen on paper. [26,7 x 21] 26,8 x 20,9 cm. Christie's. #196, 05/11/89. Christie's. #485, 9520, 11/09/00.

**OPP.51:010**; PP.51:003b

---

**Jeu de pages.** Vallauris. Early/1951. Oil & ink on canvas [Oic]. 39 x 48 cm. Private collection.

**OPP.51:086**; PP.51:004f







**La villa au palmier (La Galloise).** Vallauris. Early/1951. Oil on canvas. [39 x 47] [38 x 46] 38,1 x 53,3 cm. Michelle Rosenfeld Gallery. 2011. Formerly Opera Gallery. 2011; Mr. and Mrs. James W. Alsdorf Collection, Chicago.

**OPP.51:089**; PP.51:009; Z.XV:188; CH.68a\*:48

---

**Maison à Vallauris.** Vallauris. Early/1951. Wash. 50,5 x 66 cm. Private collection.

**OPP.51:149**; PP.51:064; Z.XV:194; BS.55:218





**Chevalier, page et moine.** Vallauris.  
[Early]/1951. Oil on canvas. 43,2 × 55,2 cm. Yale  
University Art Gallery. (Inv 2006.52.21). Charles  
B. Benenson, B.A. 1933, Collection.

**OPP.51:310**; SF.09:10r

**Dessins.** Paris~Vallauris. 1951-1953.  
Crayon on autographed letters. S/U.  
Sotheby's. #194, PF3005, 06/12/03.

**OPP.51:039**





**Assiette.** Vallauris. 3-January/1951. Ceramic plate. 40,5 cm. Sotheby's. #86, PF1030, 12/08/10.

---

**OPP.51:273**

**Assiette ronde, frise taumachique en petit relief.** Vallauris. 3-January/1951. Painted & glazed ceramic; small round plate. 18,8 cm. Sotheby's. #63, L20010, 06/18/20. Formerly Marina Picasso Collection.

---

**OPP.51:438**





**Maternité IV.** Vallauris. 5-January/1951. Pencil on paper. [27 x 21] 26,6 x30 cm. Sotheby's. #109, N09727, 05/18/17. Formerly Christie's. #423, 6922, 06/24/04; Marina Picasso Collection. (Inv 5323).

**OPP.51:042**

**Mère et enfant III.** Vallauris. 5-January/1951. Pencil on paper. 21 x 11 cm. Private collection.

**OPP.51:299**; RD.08\*:105p; RD.11\*:37





**Maternité I.** Vallauris. 5-January/1951. Pencil on paper. 21 x 26,7 cm. Sotheby's. #521, L16005, 02/05/16.

**OPP.51:375**

**Maternité VII.** Vallauris. 5-January/1951. Pencil on paper. 27 x 21 cm. Phillips. #175, NY010422, 05/19/22. Formerly Sotheby's. #598, L16005, 02/05/16.

**OPP.51:378**





**Maternité VIII.** Vallauris. 5-January/1951. Pencil on paper. 27 x 21 cm. Phillips. #175, NY010422, 05/19/22. Formerly Sotheby's. #598, L16005, 02/05/16.

**OPP.51:379**

**Maternité V.** Vallauris. 5-January/1951. Pencil on paper. [Obverse of *Maternité VI*]. 27 x 21 cm. Sotheby's. #108, N09727, 05/18/17.

**OPP.51:397**





**Maternité VI.** Vallauris. 5-January/1951. Pencil on paper.  
[Reverse of *Maternité V*]. 27 x 21 cm. Sotheby's. #108,  
N09727, 05/18/17. Formerly Marina Picasso Collection.

**OPP.51:398**

---

**Visage grotesque.** Vallauris. 6-January/1951. Pencil.  
27 x 21 cm. Private collection.

**OPP.51:193**; BA.03a\*:296





**Buste de jeune fille (Paloma)**. Vallauris. 7-January/1951. Oil & ripolin on canvas. 54,6 x 33 cm. Christie's. #696, 21961, 05/13/23. Formerly Sotheby's. #31, N08546, 05/05/09.

**OPP.51:249**

**Paloma**. Paris. 7-January/1951. Pencil on paper. 26,5 x 21 cm. Sotheby's. #597, L16005, 02/05/16. Formerly Marina Picasso Collection. (Inv 5365).

**OPP.51:313**; TK.00\*:110; WS.95a\*:131







**Paloma.** Vallauris. 8-January/1951. Oil on canvas. 54,6 x 45 cm. José Mestre Collection, Barcelona. Heather James Fine Art. 2010; Private collection, Switzerland. Courtesy Galerie Berndt, Keulen.

**OPP.51:080**; PP.51:001; Z.XV:176; BS.55:427p; DC.61:244p; HK.65:143p; JR.12\*:143p; LO.98b\*:n/a; QP.64:162p; RT.99\*:58



**Paloma à l'orange.** Vallauris. 9-January/1951. [Ripolin] Enamel on plywood. 108 x 89 cm. Private collection.

**OPP.51:007**; PP.51:035; Z.XV:175; BA.03a\*:207; DQ.74:104p; JL.71:267p; MI.53\*:154; PD.65:201p; PV.59:20; WR.96:432p



**Visage grotesque V.** Vallauris. 9-January/1951. Pencil. 27 x 21 cm. Private collection.

**OPP.51:194**; BA.03a\*:297; DO.07\*:210

---

**Visage grotesque VI.** Vallauris. 9-January/1951. Pencil. 27 x 21 cm. Private collection.

**OPP.51:195**; BA.03a\*:298; DO.07\*:212





**Visage grotesque IX.** Vallauris. 9-January/1951. Pencil. 27 x 21 cm. Private collection.

**OPP.51:196**; BA.03a\*:299; DO.07\*:211

---

**Visage grotesque XI.** Vallauris. 9-January/1951. Pencil. 27 x 21 cm. Private collection.

**OPP.51:197**; BA.03a\*:300; DO.07\*:213





**Visage grotesque IV.** Vallauris. 9-January/1951. Pencil. 27 x 21 cm. Private collection.

**OPP.51:264**; DO.07\*:209

**Visage grotesque VII.** Vallauris. 9-January/1951. Pencil. 27 x 21 cm. Private collection.

**OPP.51:367**; DO.07\*:204





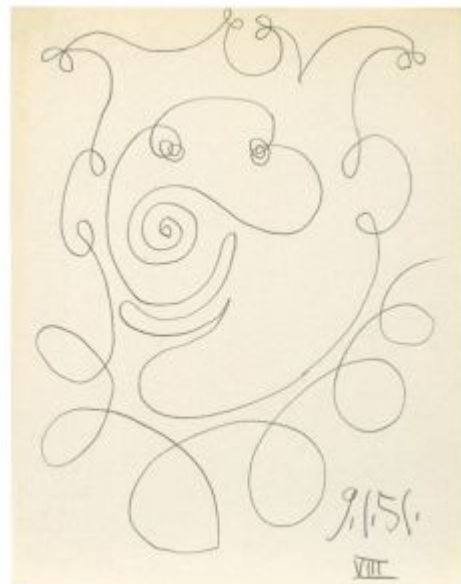
**Visage grotesque X.** Vallauris. 9-January/1951. Pencil. 27 x 21 cm. Private collection.

**OPP.51:368**; DO.07\*:206

---

**Visage grotesque VIII.** Vallauris. 9-January/1951. Pencil. 27 x 21 cm. Private collection.

**OPP.51:369**; DO.07\*:205





**Visage grotesque III.** Vallauris. 9-January/1951. Pencil. 27 x 21 cm. Private collection.

**OPP.51:370**; DO.07\*:207

---

**Visage grotesque II.** Vallauris. 9-January/1951. Pencil. 27 x 21 cm. Private collection.

**OPP.51:371**; DO.07\*:208





**Claude écrivant.** Vallauris. 11-January/1951. Oil on canvas. 46 x 38 cm. Maya Widmaier Picasso Collection, Paris.

**OPP.51:006**; PP.51:002a; HK.65:133p; LB.58:107p; OW.02:21; OW.03:21; OW.04:21; OW.13:94p; PV.59:27; WR.96:434p; WW.91:481p

**Paloma (Jeune fille avec des mains vertes).**

Vallauris. 11-January/1951. Oil on canvas. 45,5 x 37,5 cm. Marina Picasso Collection. (Inv 13212). Courtesy Galerie Jan Krugier, Geneva.

**OPP.51:281**; GS.85\*:105







**Fumées à Vallauris.** Vallauris. 12-January/1951.  
Oil on canvas. [60 x 73] 59,5 x 73,5 cm. Musée  
Picasso, Paris. Dation 1979.

**OPP.51:001**; MPP:202; PP.51:003; Z.XV:174;  
BS.55:221; CT.23:23p; DD.61:244p; HN.13:331p;  
JM.07\*:14; KG.71:59; KG.85:59; MG.14:134p;  
MI.53\*:150; MM.67:58-59; MP.85:176;  
MR.53:118p; PA.21g\*:213p; PA.79a\*:324;  
RI.07:98p; RP.60\*:185; RP.81:22.8; TO.99\*:100;  
UP.00:952; VA.04\*:n/a; WW.91:499p

---

**Tête de roi (Le Carnaval de Nice).** Vallauris. 12-  
January/1951. Lithograph in colors on wove paper  
(Reproduced in Le Patriote, 01/30/51). 47 x 39 cm.  
Georges Tabaraux Collection, Nice. Also Christie's.  
#142, 9844, 06/03/04.

**OPP.51:041**; HK.65:188p







**Chevalier.** Paris. 12-January/1951. Lithograph. 21 x 24,5 cm. Private collection.

**OPP.51:362**; B.II:1838; M:198



**Portrait de Paloma.** Vallauris. 15-January/1951. Black crayon. 13,5 x 10,5 cm. Private collection, KS. Formerly Russeck Gallery, Palm Beach; Jan Krugier Gallery.

**OPP.51:003**; PP.51:003a



**Portrait de Paloma.** Paris. 15-January/1951. Pencil on paper. [10,6 x 21] 26,8 x 21 cm. Christie's. #428, 19810, 05/14/21. Formerly Sotheby's. #110, N09727, 05/18/17. Marina Picasso Collection. (Inv 5363).

**OPP.51:314**; TK.00\*:111; WS.95a\*:132

---

**Enfant à la poupée.** Vallauris. 17-January/1951. Oil on wood. 27 x 11 cm. Private collection, Switzerland.

**OPP.51:052**; MM.02\*:229p



**Massacre en Corée.** Vallauris. 18-January/1951.  
Oil on plywood. 110 x 210 cm. Musée Picasso,  
Paris. Dation 1979.



**OPP.51:008**; MPP:203; PP.51:004; Z.XV:173;  
AB.12\*:226-227p; AC.81:129p; BA.19c\*:177p;  
BL.08:269p; BM.05:45p; BM.18\*:151;  
BS.55:429p; BW.03:25; DQ.74:190p; FC.15:32p;  
GB.14:30p; GB.87:172; GB.87:249; GP.96:305p;  
GU.00:118; HJ.83:38p; HJ.96:38p; JB.08:71p;  
JB.65:67; JF.96:152-153p; JL.06:193p;  
JL.71:115p; JR.09:250p; JR.12:30p; LU.93:359;  
LZ.06:31; MA.08a\*:n/a; MG.23a\*:90-91p;  
MI.53\*:159; MJ.55\*:119; MN.80\*:n/a;  
MP.85:177; MS.00a:182p; NC.10:55; OD.96:73p;  
PA.07e\*:n/a; PA.19d\*:319; PA.79a\*:325;  
PD.09:370p; PD.65:204p; PE.01a:80p; PF.10:56;  
RM.07:12p; RP.81:21.5; RR.09:144p;  
SD.05\*:120; SG.06:13p; SY.11\*:n/a; TH.75:202;  
TO.04\*:115; TV.06\*:36; UP.00:951;  
WR.80\*:406p; WR.96:428p; WS.11:250p;  
WS.93\*:97; WS.94:75p; WS.95a:38p;  
WW.73:130-131p; WW.91:500-501p

**Maternité.** Vallauris. 18-January/1951. Oil on wood [OiC]. 27,5 x 11,5  
cm. The Picasso Estate. (Inv 13226).

**OPP.51:342**; GU.00:119





**Deux hommes en armure.** Vallauris. 19-January/1951. Pencil. 21 x 27 cm. Galeria Mayoral, Barcelona. 2008. Formerly Sotheby's. #242A, 11/11/92.

**OPP.51:081**; PP.51:004a

**Petite fille assis dans un fauteuil.** Vallauris. 19-January/1951. Pencil. 27 x 21 cm. Galeria Mayoral, Barcelona. 2008. Formerly Sotheby's. #242A, 11/11/92.

**OPP.51:082**; PP.51:004b





**Tanagra drapée.** Vallauris. 19-January/1951. Partially painted earthenware. 17,1 cm. Sotheby's. #307, N09931, 11/13/18.

**OPP.51:410**; DL.13\*:n/a; GN.89\*:137p; HB.92\*:184p; LO.98a\*:4

---

**Chevalier en armure.** Vallauris. 21-January/1951. Pen, India ink & tinted wash. 27 x 21 cm. Musée Picasso, Paris. Dation 1979.

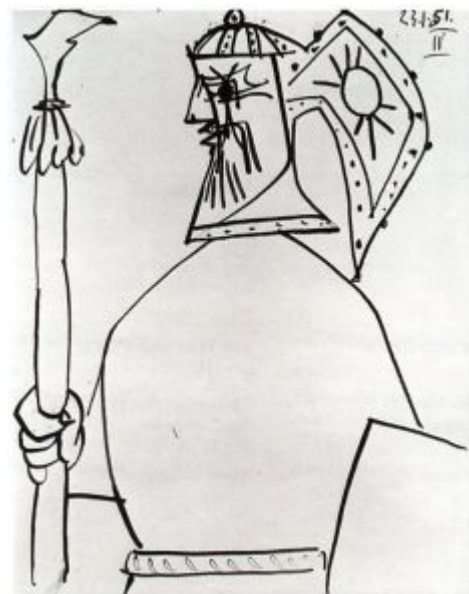
**OPP.51:083**; MPP:1400; PP.51:004c; HF.05\*:n/a; PA.19d\*:327





**Chevalier en armure III.** Vallauris. 23-January/1951. India ink on paper. 27 x 21 cm. Private collection.

**OPP.51:315**; TO.04\*:226



**Chevalier en armure IV.** Vallauris. 23-January/1951. India ink on paper. 27 x 21 cm. Private collection.

**OPP.51:316**; TO.04\*:227





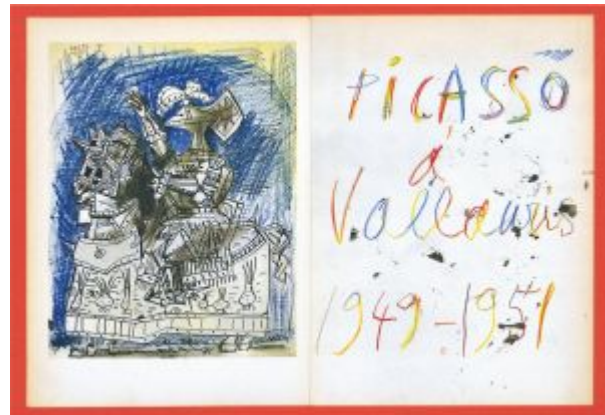
**Cheval caparaçonné et cavalier en armure.**

Vallauris. 24-January/1951. Pen, India ink & tinted wash. 13,5 x 21 cm. Musée Picasso, Paris. Dation 1979.

**OPP.51:084**; MPP:1401; PP.51:004d; HF.05\*:n/a; PA.19d\*:328

**Couverture (Picasso à Vallauris 1949-1951).** Vallauris. 24-January/1951. Lithograph (Published as cover of Verve, No. 25-26). [36,5 x 27] 35 z 26,5 cm. Artcurial. #38, 4268, 10/19/22. Also Bibliothèque Kandinsky - Centre de documentation et de recherche du MNAM-CCI.

**OPP.51:415**; PA.19d:305p





**Maternité à l'orange.** Vallauris. 25-January/1951. Oil on panel [canvas]. 124,5 x 97,5 cm. Sotheby's. #35, N07838, 11/05/02.

**OPP.51:028**; PP.51:005; DD.61:245; GB.87:280; HK.65:159p; JL.71:15p; KS.62:46; LB.58:95p; MI.53\*:155; MJ.55\*:109; MU.55\*:120; PD.65:201p; RO.53\*:155; RP.60\*:186; RP.81:22.3; UP.00:962

**Le chevalier et le page.** Vallauris. 25-January/1951. Pen, India ink & tinted wash. 32 x 24 cm. Musée Picasso, Paris. Dation 1979.

**OPP.51:085**; MPP:1402; PP.51:004e







**Cavalier en armure et page.** Vallauris. 26-January/1951. White clay, thrown piece, decorated with black wash, very lightly scratched. 2,5 x 23,5 cm. Musée Picasso, Paris. Dation 1979.

**OPP.51:236**; MPP:3711; MP.85:478; QU.04\*:n/a; UP.00:955

---

**Colombe.** Golfe-Juan. 26-January/1951. Pencil on paper. 23 x 19,5 cm. Private collection.

**OPP.51:298**; RD.11\*:36





**Cavalier en armure.** Vallauris. 28-January/1951.  
Pen & India ink and wash on paper. 21 x 27 cm.  
Christie's. #106, 5467, 06/21/12.

**OPP.51:233**

---

**Cavalier en armure.** Vallauris. 28-  
January/1951. Partially glazed terracotta  
plate. 21 cm. Sotheby's. #301, N09931,  
11/13/18. Formerly Christie's. #1204,  
3738, 05/15/15.

**OPP.51:245**





**Scène de tournoi: cavalier en armure.**

Vallauris. [26] 29-January~1-February/1951.  
White clay, thrown piece, decorated with wash &  
incisions. 22,5 cm. Musée Picasso, Paris. Dation  
1979.

**OPP.51:237**; MPP:3712; MP.85:479; UP.00:956;  
VA.04\*:n/a; VA.98\*:n/a

---

**Femme au chignon assise.** Vallauris. 30-  
January/1951. Oil & Ripolin on plywood. 108 x 89,5  
cm. Helly Nahmad Collection, Monaco/London.  
Formerly Galerie Louise Leiris, Paris.

**OPP.51:072**; PP.51:006; Z.XV:177; GC.07:145p;  
GL.89\*:19; LO.98b\*:n/a; MI.53\*:156; RT.99\*:55;  
WW.91:496p





**Cavalier en armure.** Vallauris. 30-January/1951. White earthenware plate, turned, decoration in black engobes. 2,5 x 22 cm. Musée Picasso, Paris. Dation 1979.

**OPP.51:238**; MPP:3713; MP.85:480; PA.19d\*:329; UP.00:957; VA.98\*:n/a

**Tête de roi (Le Carnaval de Nice).** Cannes. 30-January/1951. Print (Published in *Le Patriote*, 01/30/51) [After *Tête de roi (Le Carnaval de Nice)*]. 62 x 43,3 cm. Private collection.

**OPP.51:337**; AB.00\*:179





**Trois oiseaux.** Vallauris. 2-February/1951. Pen & ink on paper. 18,5 x 24,8 cm. Sotheby's. #101, N08064, 01/19/05.

**OPP.51:047**

---

**La villa provençale (La Galloise).**

Vallauris. 2-February/1951. Oil on plywood [OIC]. 60 x 73 cm. Private collection.

**OPP.51:087**; PP.51:007; Z.XV:185; KG.71:58; KG.85:58; QP.64:25p







**La colombe.** Vallauris. 2-February/1951. Red pen on paper. [19] 13 x 20,5 cm. Galerie Springmann. 2007. Formerly Artcurial. #257, 1331, 10/22/07; Inès and Gérard Sassier Collection.

**OPP.51:202**

**Paloma sur fond rouge.** Vallauris. [1950] 2-February/1951. Oil & Ripolin on board. 124,5 x 101,5 cm. Private collection.

**OPP.51:390**; PP.50:006; Z.XV:156; BA.03a\*:206; DD.61:244p; HK.65:141p; MG.13\*:101p; MI.53\*:141; WS.94:109p; WS.95a:51p





**La villa au palmier (La Galloise).** Vallauris. 4-February/1951. Oil on plywood. [88,9 x 116,2] 89,1 x 115,9 cm. Christie's. #44A, 15004, 11/13/17. Formerly The Art Institute of Chicago. (Inv 1988.141.21). Gift of Mary and Leigh Block.

**OPP.51:088**; PP.51:008; Z.XV:187; BS.55:217; NY.53b\*:7; OS.56\*:283; SD.13a\*:202; WA.67a\*:41/39

---

**Portrait de Maya.** Vallauris. 13-February/1951. Pencil on paper. S/U. Maya Widmaier Picasso Collection, Paris.

**OPP.51:494**





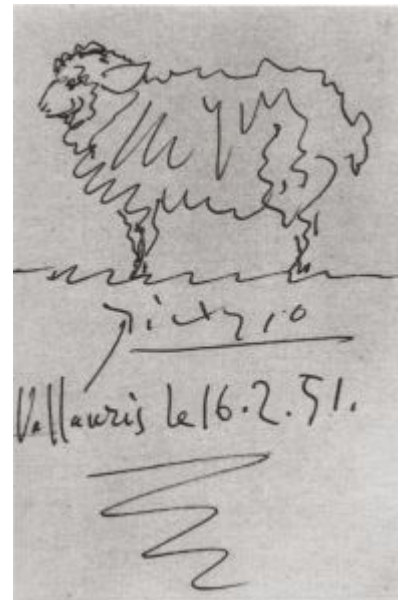
**La villa au crépuscule (La Galloise)**. Vallauris. 16-February/1951. Oil on plywood. 38 x 46 cm. Christie's. #33, 7735, 06/23/09. Formerly Werner G. Scharf Collection; Mrs. Brian Derek Mace Collection.

**OPP.51:090**; PP.51:010; Z.XV:186; DK.61\*:38; TO.99\*:99

---

**Le mouton**. Vallauris. 16-February/1951. Pencil. 16 x 11 cm. Private collection.

**OPP.51:091**; PP.51:011; Z.XV:168







**Le citronnier.** Vallauris. 16-February/1951. Pen & ink. 37,5 x 27 cm. Private collection. Formerly Sotheby's. #94, 02/22/89.

**OPP.51:092;** PP.51:011a

---

**Le chevalier et le page.** Vallauris. 17-February/1951. Lithograph on Arches, edition 50. [36,9 x 26,7] 36,5 x 26,5 cm. Christie's. #206, 1322, 04/28/03. Also Mr. & Mrs. Mitchell Miller Collection.

**OPP.51:032;** B.I:684; M:200; WC.62\*:33





**Jeux de pages.** Vallauris. 19-February/1951. Lithograph on wove paper, edition 50. 32 x 42,5 cm. Christie's. #175, 8575, 09/12/01.

**OPP.51:012**; B.I:685; M:199; BS.55:219; GB.14\*:139; JR.10\*:115p

---

**Le chevalier et les pages.** Vallauris. 22-February/1951. Pen & brush & ink, wash & gouache on paper. [50,5 x 66] 50,3 x 65,7 cm. Sotheby's. #6, L15006, 06/24/15.

**OPP.51:094**; PP.51:013; Z.XV:183; JL.66\*:144





**Jeux de pages.** Vallauris. 23-February/1951. Oil & pen & black ink & ink wash on panel. [39 x 48] 38,2 x 47,5 cm. Christie's. #48C, 3783, 11/12/15. Formerly Marina Picasso Collection. (Inv 13217).

**OPP.51:204**; GS.85\*:107; MP.81\*:187;  
MP.83\*:187

---

**Chevalier, pages et moine.** Paris. 23-February/1951. Oil, India ink, mixed media on board. 46 x 55 cm. Lefevre Fine Art Limited. 2015.

**OPP.51:297**; GL.89\*:20; SO.06\*:86p





**Jeux de pages.** Vallauris. 24-February/1951. Oil on wood panel. 54 x 65 cm. Musée Picasso, Paris. Dation 1979.

**OPP.51:050**; MPP:204; PP.51:014; Z.XV:184; AB.57\*:97p; BA.19c\*:186p; CP.95:54p; DD.61:244p; DQ.74:207p; GC.96:255p; GU.00:120; JR.12:31p; MA.08a\*:n/a; MN.80\*:n/a; MP.85:178; MR.59\*:50; PA.19d\*:330; PA.54b\*:22; PA.79a\*:326; PH.58\*:230; RP.60\*:187; RP.81:23.6; UP.00:954; WW.91:477p

**Portrait de Karl Marx.** Vallauris. 26-February/1951. Red ballpoint on paper. 31 x 24 cm. Private collection. Formerly Christie's. #879, 6171, 07/01/99.

**OPP.51:295**





**Chevalier en armure: pages et femme nue.**  
Vallauris. 27-February/1951. Pen & India ink and wash on joined paper. 32 x 48 cm. Christie's.  
#181, 17692, 10/18/19. Formerly Christie's.  
#105, 5467, 06/21/12. Marina Picasso Collection.  
(Inv 05227).

**OPP.51:095**; PP.51:015; JR.93\*:84; MP.81\*:246;  
TK.86\*:D-47; VE.81\*:299

**Claude et Paloma avec un tricycle.**  
Vallauris. [March]/1951. Ink & gesso on wood panel. 49,8 x 60,7 cm. Dee Dee and Herb Glimcher Collection.

**OPP.51:286**; MI.01\*:143







**Picador en armure dans l'arène.** Vallauris. 2-March/1951. Pen & wash in sketchbook. 24,5 x 14,3 cm. Musée Picasso, Paris.

**OPP.51:099**; MPP:1992.1.2r; PP.51:019; BL.96:49.2r

---

**Scène de corrida.** Vallauris. 2-March/1951. Pen & India ink in sketchbook. 14,3 x 24,5 cm. Musée Picasso, Paris.

**OPP.51:100**; MPP:1992.1.3r; PP.51:020; BL.96:47.3r





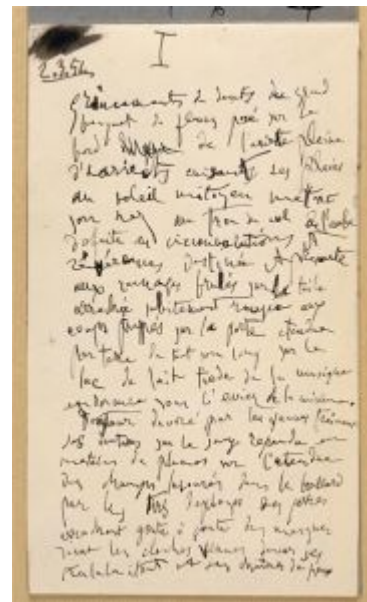


**1re de couverture.** Vallauris. 2-March~12-April/1951. Mixed media. 24,5 x 14,3 cm. Musée Picasso, Paris.

**OPP.51:096**; MPP:1992.1.c1; PP.51:016;  
BL.96:47.c1

**Grincements de dents ....** Vallauris. 2-March~12-April/1951.  
Pen & India ink. 24,5 x 14,3 cm. Musée Picasso, Paris.

**OPP.51:206**; MPP:1992.1.1r; BL.96:47.1r





**Grincements de dents ...** Vallauris. 2-March~12-April/1951. Pen & India ink. 24,5 x 14,3 cm. Musée Picasso, Paris.

**OPP.51:207**; MPP:1992.1.1v; BL.96:47.1v

**sacre nom de nom de nom ....** Vallauris. 2-March~12-April/1951. Pen & India ink. 24,5 x 14,3 cm. Musée Picasso, Paris.

**OPP.51:211**; MPP:1992.1.4r; BL.96:47.4r





**Mettre entre les draps ....** Vallauris. 2-March~12-April/1951. Pen & India ink. 24,5 x 14,3 cm. Musée Picasso, Paris.

**OPP.51:215**; MPP:1992.1.6r; BL.96:47.6r

**Mais le grand festin ....** Vallauris. 2-March~12-April/1951. Pen & India ink. 24,5 x 14,3 cm. Musée Picasso, Paris.

**OPP.51:217**; MPP:1992.1.7r; BL.96:47.7r





**4e de couverture.** Vallauris. 2-March~12-April/1951. Mixed media. 14,3 x 24,5 cm. Musée Picasso, Paris.

**OPP.51:219**; MPP:1992.1.c4; BL.96:47.c4

---

**3ème de couverture.** Vallauris. 2-March~12-April/1951. Mixed media. 14,3 x 24,5 cm. Musée Picasso, Paris.

**OPP.51:403**; MPP:1992.1.c3; BL.96:47.c3





**Corrida (Para Andrés Castel de vas amigo).** Vallauris. 3-March/1951. Brush, pen & ink on paper. 21 x 27 cm. Sotheby's. #346, L20004, 02/05/20. Formerly Sotheby's. #155, L09607, 06/25/09.

**OPP.51:250**; PR.12\*:1071

**Chevalier, moines et pages.** Vallauris. 4-March/1951. India ink. 50,6 x 66 cm. Private collection.

**OPP.51:101**; PP.51:020a





**Chevalier et picador dans l'arène.** Vallauris. 5-March/1951. Pen & ink on paper. 50,7 x 65,8 cm. Omer Tiroche Gallery, London. Formerly Artcurial. #171, A3912, 12/30/21; Sotheby's. #588, L16005, 02/05/16; Marina Picasso Collection.

**OPP.51:002**; JR.93\*:85; MR.18\*:n/a;  
NY.91a\*:n/a; VL.94\*:24

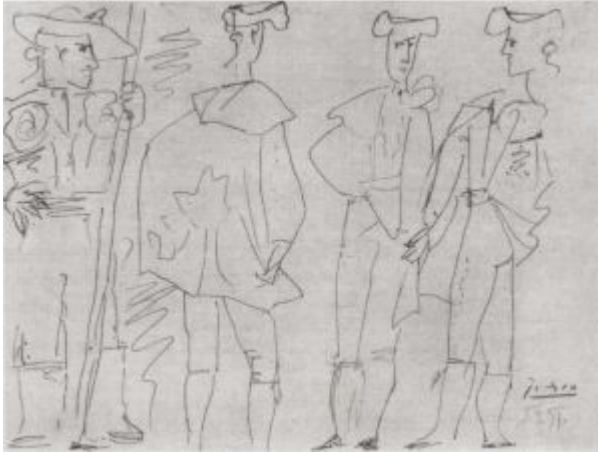
---

**Le chevalier dans l'arène.** Vallauris. 5-March/1951. India ink wash & gouache. [50,5 x 66] 50,6 x 65,8 cm. Museum Sammlung Rosengart, Luzern. Siegfried & Angela Rosengart Collection.

**OPP.51:093**; PP.51:012; Z.XV:182;  
JC.01b\*:122; RD.00\*:129; WS.93\*:100







**Les toréadors.** Vallauris. 5-March/1951. India ink. 50,5 x 66 cm. Private collection.

**OPP.51:102**; PP.51:021; Z.XV:179

---

**Le picador.** Vallauris. 5-March/1951. Pen & ink & ink wash on paper. [50,3 x 65,5] 50,5 x 66 cm. Sotheby's. #107, N09431, 11/05/15. Formerly Adolph Alfred Taubman Collection; Sotheby's. #374, 12/05/90.

**OPP.51:103**; PP.51:022; Z.XV:180; LO.54a\*:19





**La pique.** Vallauris. 5-March/1951. Ink wash on paper. 50,5 x 66 [60] cm. Artcurial. #17, 1306, 10/20/07.

**OPP.51:104**; PP.51:023; Z.XV:181

---

**Chevaliers.** Vallauris. 7-March/1951. Ink. 51 x 66 cm. Private collection.

**OPP.51:274**; GL.81\*:34





**Femme lisant.** Vallauris. 8-March/1951. Red earthenware, painted, decoration in engobes. 1,3 x 22,5 cm. Musée Picasso, Paris. Dation 1979.

**OPP.51:269**; MPP:3724; MP.85:481;  
PA.08b\*:n/a; VA.04\*:n/a

**Le portement de croix d'après le retable de Saint-Thomas de Maître Francke.** Vallauris. 9-March/1951. Black & tinted wash. 21 x 26,8 cm. Musée Picasso, Paris. Formerly Marina Picasso Collection. (Inv 05240).

**OPP.51:105**; MPP:1982.161; PP.51:024;  
LW.15\*:229p; MP.81\*:247





**cent fois sur le métier B ...** Vallauris. 9-March1951. Pen & India ink.  
24,5 x 14,3 cm. Musée Picasso, Paris.

**OPP.51:213**; MPP:1992.1.5r; BL.96:47.5r

**Femme (Projet de céramique)**. Paris. 1951. Gouache on paper.  
18 x 9,5 cm. Galeria Mayoral, Barcelona.

**OPP.51:332**; BA.99e\*:n/a; FC.00\*:91; PN.99b\*:55p





**Le départ (I)**. Paris. 12-March/1951. Lithograph on Arches, edition 50. [13,8 x 17,4] 34,4 x 43 cm. Leslie Sacks Fine Art. 2005.

**OPP.51:038**; B.I:686.I; M:201.01

**Le départ (II)**. Paris. 12-March/1951. Lithograph. 34,5 x 43 cm. Private collection.

**OPP.51:358**; M:201.02







**Femme dessinant (Françoise)**. Vallauris. 13-March/1951.  
Oil on plywood. 116 x 89 cm. Private collection. Courtesy  
Phyllis Hattis Fine Arts, New York.

**OPP.51:005**; PP.51:025; Z.XV:178; JR.12\*:149p; MF.01\*:36;  
MI.53\*:157; PV.59:30; VO.16:117p; WR.96:439p

---

**Nature morte**. Vallauris. 13-March/1951.  
Red earthenware, decoration in engobes.  
18 x 49 x 2,5 cm. Musée Picasso, Paris.  
Dation 1979.

**OPP.51:272**; MPP:3714; MP.85:482;  
PA.08b\*:n/a; VA.04\*:n/a







**Satyre.** Vallauris. 15-March/1951. Painted plaster relief. 20 x 7,6 x 2 cm. Christie's. #668, 9358, 05/10/00.

**OPP.51:296**

---

**Portrait d'enfant (Claude).** Vallauris. 17-March/1951. Oil & charcoal on wood. 28 x 19,5 cm. Fundación Almine & Bernard Ruiz-Picasso para el Arte.

**OPP.51:152**; JR.12\*:130p; MG.04c\*:18





**Enfant habillé en page.** Vallauris. 17-March/1951. India ink on paper. 32 x 24 cm. Private collection.

**OPP.51:333**; GA.00\*:74; JR.12\*:138p

---

**Faunes.** Vallauris. 18-March/1951. White earthenware figure, modeled, decoration in engobes. 20,4 x 8 cm. Musée Picasso, Paris. Dation 1979.

**OPP.51:271**; MPP:3715; MP.85:483; PA.08b\*:n/a; PA.79a\*:n/a





**Femme allongée.** Vallauris. 19-March/1951. Painted terracotta. 11 x 21,5 x 5,5 cm. Museo Picasso, Málaga. On temporary loan from Fundación Almine & Bernard Ruiz-Picasso para el Arte.

**OPP.51:287**; JR.10\*:87p; JR.12\*:289p; MI.01\*:144; NC.17\*:122

---

**Femme assise.** Vallauris. 19-March/1951. White terracotta, modeled & painted with slips. 12,5 x 8 x 5,5 cm. Museo Picasso, Málaga. On temporary loan from Fundación Almine & Bernard Ruiz-Picasso para el Arte.

**OPP.51:338**; JR.10\*:86p; JR.12\*:289p; NC.17\*:121





**Femme au drapé.** Vallauris. 19-March/1951. White terracotta, modeled, sculpted, engraved & painted with slips. 25 x 10 x 8 cm. Museo Picasso, Málaga. On temporary loan from Fundación Almine & Bernard Ruiz-Picasso para el Arte.

**OPP.51:339**; JR.10\*:86p; JR.12\*:289p; MG.18\*:82p; NC.17\*:120

---

**Mère et enfant.** Vallauris. Spring/1951. Brush & India ink on paper. 27 x 21 cm. Christie's. #401, 6593, 06/27/02.

**OPP.51:020**; DK.61\*:100





**Mère et enfant.** Vallauris. Spring/1951. India ink. 27 x 21 cm. Private collection.

**OPP.51:114**; PP.51:032; Z.XV:170; HK.65:141p



**Mère et enfant.** Vallauris. Spring/1951. India ink. 27 x 21 cm. Private collection.

**OPP.51:115**; PP.51:033; Z.XV:171



**Mère et enfant.** Vallauris. Spring/1951. India ink. 27 x 21 cm.  
Private collection.

**OPP.51:116**; PP.51:034; Z.XV:172



**Mère et enfant.** Vallauris. [Spring]/1951. Brush & ink on paper. 27 x 21,6 cm. Mr. and Mrs. Chapin Riley Collection.

**OPP.51:304**; HK.65:141p; WC.62\*:37





**Mère et enfant.** Vallauris. [Spring]/1951. Brush & ink on paper. 53,3 x 45,7 cm. Private collection.

**OPP.51:312**; HK.65:142p

**Mère et enfant.** Paris. [Spring]/1951. Brush & India ink on paper. 27 x 21 cm. Christie's. #238, 1104, 02/07/13.

**OPP.51:334**





**Mère et enfant.** Vallauris. [Spring]/1951. India ink on paper. 27 x 21 cm. Private collection.

**OPP.51:355**; UA.80:20p

---

**Mère et enfant.** Vallauris. Spring/1951. India ink on paper. 27,2 x 21,3 cm. The Israel Museum, Jerusalem. (Inv B70.0190). Gift of Jan and Ellen Mitchell, New York, through the America-Israel Cultural Foundation.

**OPP.51:413**; JR.16\*:n/a





**Mère et enfant.** Vallauris. Spring/1951. Brush & ink on paper. 27 x 21,3 cm. Heritage Auctions. #77009, 8010, 06/18/20.

**OPP.51:434**

---

**Mère et enfant.** Vallauris. [Spring]/1951. Pen & India ink on paper. 26,3 x 21 cm. Lan Anh Dinh Collection. Formerly Galerie Kornfeld und Cie, Bern.

**OPP.51:439**





**Claude et Paloma avec leur mère.** Vallauris. 21-March/1951. Ink & wash. 31,1 x 22,8 cm. Private collection.

**OPP.51:106**; PP.51:025a; FG.64:228p;  
HK.65:158p

**Femme allongée.** Vallauris. [21-March]/1951. Wash on plywood. S/U. Private collection.

**OPP.51:241**; UP.00:961





**Scène de corrida: trois études de picador sur sa monture; détails de son habit; tête de cheval.** Vallauris. 27-March/1951. Pen & India ink wash in sketchbook. 24,5 x 14,3 cm. Musée Picasso, Paris.

**OPP.51:107**; MPP:1992.1.3v; PP.51:026; BL.96:47.3v

**Picador dans l'arène.** Vallauris. 27-March/1951. Pen & India ink wash in sketchbook. 24,5 x 14,3 cm. Musée Picasso, Paris.

**OPP.51:108**; MPP:1992.1.4v; PP.51:027; BL.96:47.4v



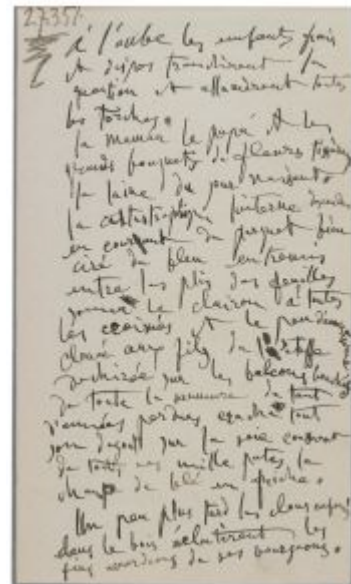


**Torero dans sa loge.** Vallauris. 27-March/1951. Pen & India ink wash in sketchbook. 24,5 x 14,3 cm. Musée Picasso, Paris.

**OPP.51:109**; MPP:1992.1.5v; PP.51:028; BL.96:47.5v

**à l'aube les enfants ....** Vallauris. 27-March/1951. Pen & India ink. 24,5 x 14,3 cm. Musée Picasso, Paris.

**OPP.51:221**; MPP:1992.1.8r; BL.96:47.8r; BP.21:472p; PP.19:53p







**Jeux de pages.** Vallauris. 28-March/1951.  
Lithograph. 38,8 x 48,7 cm. Kunstmuseum  
Picasso, Münster.

**OPP.51:350**; M:209; GB.14\*:140

**Plat en trompe l'œil.** Vallauris. 28-  
March/1951. Terracotta plate decorated in  
engobes. 31 x 37 x 5,5 cm. Musée  
Municipal d'Art Moderne, Céret. (Inv MAMC  
1991.0324).

**OPP.51:393**; BA.18\*:42; CE.04\*:143





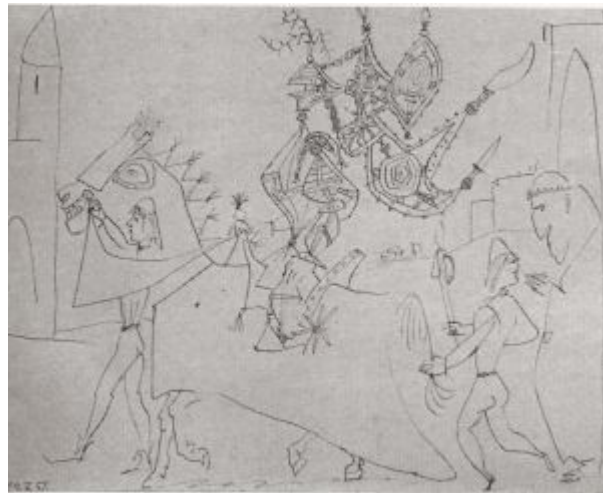
**Scène de chevalerie.** Vallauris. 29-March/1951.  
Pen & India ink in sketchbook. 14,3 x 24,5 cm.  
Musée Picasso, Paris. Acquisition 1992.

**OPP.51:110**; MPP:1992.1.6v; PP.51:029;  
BL.96:47.6v; PA.19d\*:326

---

**Chevalier, moines et pages.** Vallauris.  
29-March/1951. India ink. 50,7 x 66 cm.  
Private collection.

**OPP.51:111**; PP.51:029a





**Caricature: personnage en armure entre un moine et un jeune homme.** Vallauris. 29-March/1951. Pen & India ink in sketchbook. 24,5 x 14,3 cm. Musée Picasso, Paris.

**OPP.51:112**; MPP:1992.1.7v; PP.51:030; BL.96:47.7v

**Caricature: personnage en armure entre un moine et un jeune homme.** Vallauris. 29-March/1951. Pen & India ink in sketchbook. 24,5 x 14,3 cm. Musée Picasso, Paris.

**OPP.51:113**; MPP:1992.1.8v; PP.51:031; BL.96:47.8v





**Le Jugement de Pàris.** Vallauris. 31-March~7-April/1951. Pen, India ink & tinted wash. 50,6 x 65,6 cm. Musée Picasso, Paris. Dation 1979.

**OPP.51:117**; MPP:1403; PP.51:034a; GD.77:67p;  
JL.71:267p; JR.10:22p; LE.21\*:111;  
MA.08a\*:n/a; UP.00:953

---

**Le départ (IV).** Paris. Post-2-April/1951.  
Lithograph in colors on wove paper, edition  
5. 36,5 x 44 cm. Christie's. #47, 6683,  
10/09/02.

**OPP.51:026**; B.I:686.III; M:201.04



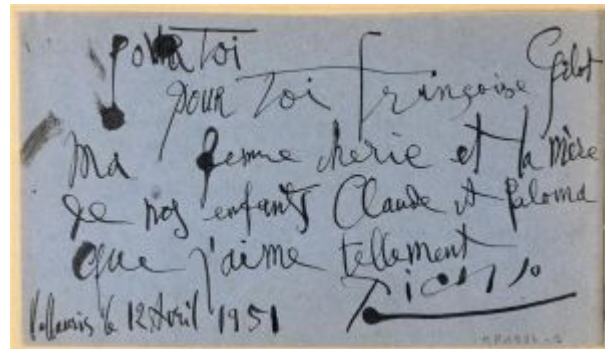


**Le départ (III)**. Paris. 2-April/1951. Lithograph.  
36 x 44 cm. Private collection.

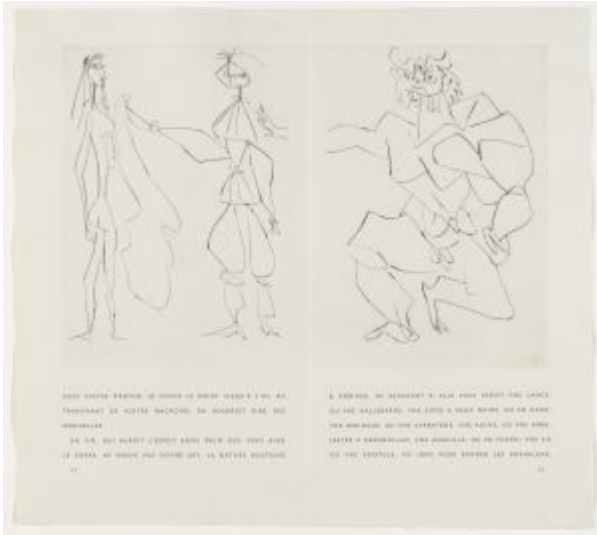
**OPP.51:359**; M:201.03

**2e de couverture**. Vallauris. 12-  
April/1951. Pen & India ink in sketchbook.  
14,3 x 24,5 cm. Musée Picasso, Paris.

**OPP.51:097**; MPP:1992.1.c2; PP.51:017;  
BL.96:47.c2; BP.21:473p; PP.19:52p







**Adrian de Monluc, La Maigre L010 (Illustration).** Vallauris. 13-April/1051. Drypoint (double page) on Arches wove paper. 25,7 x 38,6 cm. Sotheby's. #359, PF6025, 10/11/06. Also Fine Arts Museums of San Francisco. (Inv 1998.40.116.7).

**OPP.51:158;** B.I:702; Ba:881; GC:63.10; BO.00\*:90-91; GM.81\*:293

**Corrida.** Vallauris. 20-April/1951. Oval plate in terracotta, painted in black, blue & maroon on glazed white ground. 65 x 29 cm. Marina Picasso Collection. (Inv 56944). Courtesy Galerie Jan Krugier, Geneva.

**OPP.51:280;** GS.85\*:99







**Le départ (VIII)**. Paris. 30-April/1951.  
Lithograph. 56 x 45 cm. Bonhams. #63, 21832,  
11/25/14.

**OPP.51:361**; M:201.08

**Le départ (V)**. Paris. 1-May/1951.  
Lithograph. 45,2 x 55,8 cm. Private  
collection.

**OPP.51:347**; M:201.05





**Photographie rehaussée du Magazine Vogue.** Vallauris. May/1951. Ink on photograph. S/U. Musée Picasso, Paris.

**OPP.51:300**; SP.96:29

**Photographie rehaussée du Magazine Vogue.** Vallauris. May/1951. Ink on photograph. S/U. Musée Picasso, Paris.

**OPP.51:301**; SP.96:30





**Photographie rehaussée du Magazine Vogue.** Vallauris. May/1951.  
Ink on photograph. S/U. Musée Picasso, Paris.

**OPP.51:302**; SP.96:31

**Croquis en forme de deux silhouettes.** Vallauris.  
May/1951. Black ink on Magazine Vogue. 31,7 x 24,7  
cm. Musée Picasso, Paris. (Inv FP155-1.p.19).

**OPP.51:440**



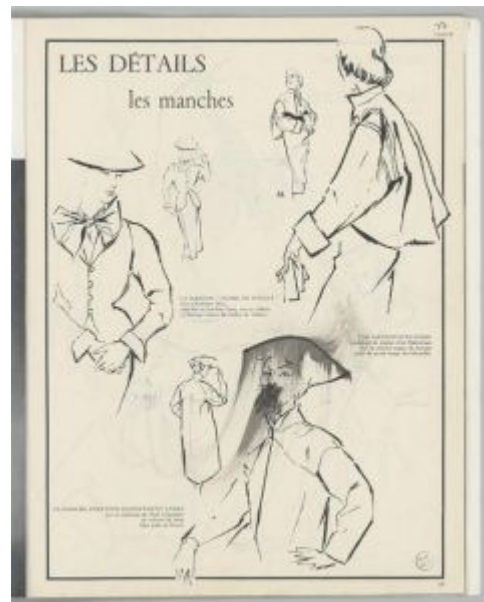


**Croquis de satyre.** Vallauris. May/1951. Black ink on Magazine Vogue. 31,7 x 24,7 cm. Musée Picasso, Paris. (Inv FP155-1.p.50).

**OPP.51:441**

**Croquis en forme de barbe.** Vallauris. May/1951. Black ink on Magazine Vogue. 31,7 x 24,7 cm. Musée Picasso, Paris. (Inv FP155-1.p.69).

**OPP.51:442**



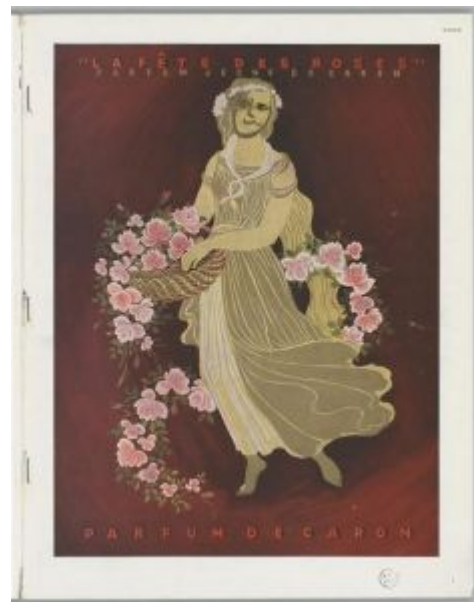


**Croquis en forme de barbes.** Vallauris. May/1951. Black ink on Magazine Vogue. 31,7 x 24,7 cm. Musée Picasso, Paris. (Inv FP155-1.p.70).

**OPP.51:443**

**Visage.** Vallauris. May/1951. Brush & black ink on Magazine Vogue. 31,7 x 24,7 cm. Musée Picasso, Paris. (Inv FP155-1). Page 1.

**OPP.51:445**





**Croquis d'un homme à chapeau.** Vallauris. May/1951.  
Brush & black ink on Magazine Vogue. 31,7 x 24,7 cm. Musée  
Picasso, Paris. (Inv FP155-1). Page 10.

**OPP.51:446**

**Croquis en forme de visage.** Vallauris. May/1951.  
Brush & black ink on Magazine Vogue. 31,7 x 24,7 cm.  
Musée Picasso, Paris. (Inv FP155-1). Page 11.

**OPP.51:447**







**Croquis en forme de sexe masculin.** Vallauris. May/1951.  
Brush & black ink on Magazine Vogue. 31,7 x 24,7 cm. Musée  
Picasso, Paris. (Inv FP155-1). Page 13.

**OPP.51:448**

**Croquis en forme de silhouette.** Vallauris. May/1951.  
Brush & black ink on Magazine Vogue. 31,7 x 24,7 cm.  
Musée Picasso, Paris. (Inv FP155-1). Page 21.

**OPP.51:449**





**Croquis en forme de satyre.** Vallauris. May/1951. Brush & black ink on Magazine Vogue. 31,7 x 24,7 cm. Musée Picasso, Paris. (Inv FP155-1). Page 22.

**OPP.51:450**

**Croquis en forme de tâches de sang.** Vallauris. May/1951. Brush & black ink on Magazine Vogue. 31,7 x 24,7 cm. Musée Picasso, Paris. (Inv FP155-1). Page 23.

**OPP.51:451**





**Croquis en forme de satyre.** Vallauris. May/1951. Brush & black ink on Magazine Vogue. 31,7 x 24,7 cm. Musée Picasso, Paris. (Inv FP155-1). Page 24.

**OPP.51:452**

**Croquis en forme de mains.** Vallauris. May/1951. Brush & black ink on Magazine Vogue. 31,7 x 24,7 cm. Musée Picasso, Paris. (Inv FP155-1). Page 31.

**OPP.51:453**





**Croquis en forme de jambe et chapeau.** Vallauris. May/1951. Brush & black ink on Magazine Vogue. 31,7 x 24,7 cm. Musée Picasso, Paris. (Inv FP155-1). Page 33.

**OPP.51:454**; PP.20\*:349

**Croquis sur queue du cheval.** Vallauris. May/1951. Brush & black ink on Magazine Vogue. 31,7 x 24,7 cm. Musée Picasso, Paris. (Inv FP155-1). Page 4.

**OPP.51:455**





**Croquis en forme de gaz.** Vallauris. May/1951. Brush & black ink on Magazine Vogue. 31,7 x 24,7 cm. Musée Picasso, Paris. (Inv FP155-1). Page 48.

**OPP.51:456**



**Croquis en forme de sexe masculin.** Vallauris. May/1951. Brush & black ink on Magazine Vogue. 31,7 x 24,7 cm. Musée Picasso, Paris. (Inv FP155-1). Page 49.

**OPP.51:457**



**Croquis en forme de visage.** Vallauris. May/1951. Brush & black ink on Magazine Vogue. 31,7 x 24,7 cm. Musée Picasso, Paris. (Inv FP155-1). Page 5.

**OPP.51:458**

**Croquis de deux silhouettes copulant.** Vallauris. May/1951. Brush & black ink on Magazine Vogue. 31,7 x 24,7 cm. Musée Picasso, Paris. (Inv FP155-1). Page 53.

**OPP.51:459**







**Croquis en forme de satire.** Vallauris. May/1951. Brush & black ink on Magazine Vogue. 31,7 x 24,7 cm. Musée Picasso, Paris. (Inv FP155-1). Page 54.

**OPP.51:460**

**Croquis en forme de revolver.** Vallauris. May/1951. Brush & black ink on Magazine Vogue. 31,7 x 24,7 cm. Musée Picasso, Paris. (Inv FP155-1). Page 55.

**OPP.51:461**





**Croquis en forme de visage et bouquet.** Vallauris. May/1951. Brush & black ink on Magazine Vogue. 31,7 x 24,7 cm. Musée Picasso, Paris. (Inv FP155-1). Page 71.

**OPP.51:462**



**Croquis en forme de visage.** Vallauris. May/1951. Brush & black ink on Magazine Vogue. 31,7 x 24,7 cm. Musée Picasso, Paris. (Inv FP155-1). Page 72.

**OPP.51:463**



**Croquis d'un homme à chapeau.** Vallauris. May/1951. Brush & black ink on Magazine Vogue. 31,7 x 24,7 cm. Musée Picasso, Paris. (Inv FP155-1). Page 9.

**OPP.51:464**

**Croquis en forme de ligne noire.** Vallauris. May/1951. Black ink on magazine page. 31,7 x 24,7 cm. Musée Picasso, Paris. (Inv FP155-1).

**OPP.51:465**





**Croquis en forme de visage.** Vallauris. May/1951. Black ink on magazine page. 31,7 x 24,7 cm. Musée Picasso, Paris. (Inv FP155-1).

---

**OPP.51:466**

**Vase à deux anses poisson.** Vallauris. 9-May/1951. White earthenware vase, decoration in engobes under glaze, painted in brown & black. 22,5 cm. Museu de Ceràmica, Barcelona. Also Christie's. #173, 2415, 12/18/02.

---

**OPP.51:029**; AR:133.I; JM.07\*:60





**Cruche au visage féminin.** Vallauris. 9-May/1951. White clay, painted in engobes. 36,5 x 25 x 19 cm. Museo Picasso, Málaga. Gift of Christine Ruiz-Picasso.

**OPP.51:155**; MPM:1.72A; DP.20\*:152; GS.03:1.118;  
NC.17\*:123

---

**Faune debout.** Vallauris. 12-May/1951. Colored pencil on buff paper. 34,8 x 25,8 cm. Bonhams. #87AR, 24743, 03/01/18.

**OPP.51:406**





**Corrida en Arles.** Paris. 17-May/1951. Aquatint. [41,5 x 54,5] 41,8 x 54,4 cm. Marina Picasso Collection. (Inv 23727). Courtesy Galerie Jan Krugier, Geneva. Also Sotheby's. #127, N08344, 09/26/07.

**OPP.51:200**; B.I:1355; Ba:887; BB.83\*:117; FE.87\*:109-112; GD.02\*:67; GS.85\*:108; ML.86\*:11; UM.94\*:75

---

**La corrida.** Vallauris. 18-May/1951. Painted & glazed ceramic; large bowl. 35,8 cm. Sotheby's. #25, N09727, 05/18/17. Formerly Marina Picasso Collection.

**OPP.51:400**







**Le départ (X)**. Paris. Post-20-May/1951.  
Lithograph, edition 50. 54 x 65 cm. Sotheby's.  
#223, L06160, 03/28/06.

**OPP.51:078**; B.I:686.VII; M:201.10; TO.99\*:97;  
WS.95a\*:154



**Le départ (IX)**. Paris. 20-May/1951.  
Lithograph, edition 50. 45 x 55,9 cm.  
Sotheby's. #200, L06161, 10/03/06.

**OPP.51:159**; B.I:686.VI; M:201.09



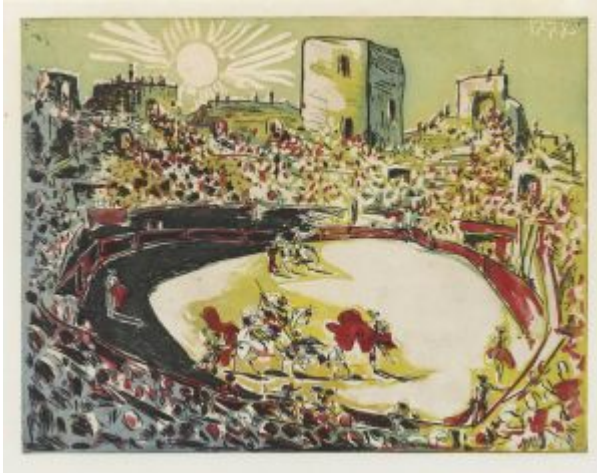
**Le départ (VII)**. Paris. Post-21-May/1951.  
Lithograph on Rives/Arches. 34,9 x 43,8 cm.  
Christie's. #207, 1322, 04/28/03.

**OPP.51:035**; B.I:686.V; M:201.07; GP.96:306p

**Le départ (VI)**. Paris. 21-May/1951.  
Lithograph. 35 x 44 cm. Phillips. #93,  
UK030223, 06/07-08/23.

**OPP.51:360**; M:201.06





**Corrida en Arles.** Paris. 28-May/1951. Aquatint printed in colors. 42 x 54 cm. Christie's. #87, 7958, 03/29/11.

**OPP.51:278;** B.I:1355.II; Ba:887.Bb

**Corrida en Arles.** Arles. 28-May/1951. Aquatint. 42 x 54,4 cm. Sotheby's. #1, N09217, 11/03/14.

**OPP.51:356**



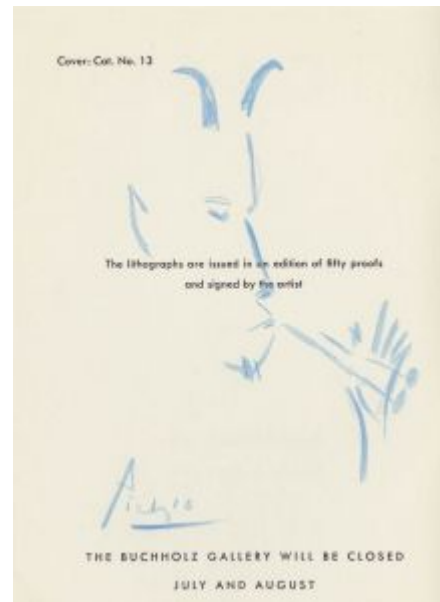


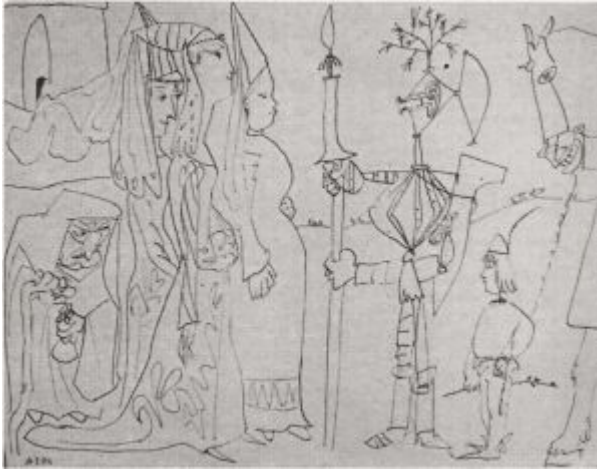
**Centaure au thyrsos (Pour Raoul Pellequer).**  
Paris. 29-May/1951. Pen & ink on paper. S/U. The Simonow Collection, L'Abbaye de Flaran, Valence-sur-Baïse. (Inv 722).

**OPP.51:357**

**Programme.** Cannes. 29-May ~ 23-June/1951. Ink on program for Picasso Recent Lithographs at the Buchholz Gallery. 11 x 16 cm. Christie's. #234, 2012, 06/25/08.

**OPP.51:234**





**Chevalier, dames et pages.** Paris. 30-May/1951.  
India ink. 50,7 x 66 cm. Private collection.

**OPP.51:118**; PP.51:034b

---

**Métamorphose (Pour Paul Éluard).**  
Vallauris. 6-June/1951. Pen & ink on paper.  
13,2 x 21,2 cm. Sotheby's. #363, N08024,  
11/05/04.

**OPP.51:045**





**on est au soleil ....** Vallauris. 7-June/1951. Ink. S/U.  
Musée Picasso, Paris.

**OPP.51:161**; CW.89:329p

**on est au soleil ....** Vallauris. 7-June/1951. Ink.  
S/U. Musée Picasso, Paris.

**OPP.51:162**; CW.89:330p







**on est au soleil ...** Vallauris. 7-June/1951. Ink. S/U.  
Musée Picasso, Paris.

**OPP.51:163**; CW.89:331p

**Jeux d'enfants (Françoise, Claude et Paloma)**. Vallauris. 14-June/1951. Oil & enamel on plywood. 113 x 145,5 cm.  
Private collection.

**OPP.51:004**; PP.51:038; Z.XV:191;  
DD.61:244p; DD.74:173p; GA.00\*:77;  
GR.90:62p; JR.10\*:113p; JR.12\*:135p;  
MG.04b\*:101; MI.53\*:158; PH.58\*:231;  
RO.53\*:117; TK.00\*:122; WR.96\*:437p;  
WS.94:102p; WS.95a\*:142





**La lecture et les jeux I.** Vallauris. 14-June/1951.  
Oil on plywood [OïC]. 73 x 92 cm. Private  
collection.

**OPP.51:119**; PP.51:036; Z.XV:190; GR.90:62p

**Mère et enfants jouant (Françoise,  
Claude et Paloma).** Vallauris. 14-  
June/1951. Oil on plywood panel. 73 x 91,5  
cm. Musée Picasso, Antibes. On loan from  
Musée Picasso, Paris, 1991. Jacqueline  
Roque Picasso Collection. Dation 1990.

**OPP.51:120**; MPA:1991.1.3;  
MPP:1990.24; PP.51:037; WS:95a;  
BA.03a\*:211; BD.16\*:78; GR.90\*:21;  
HP.65:93p; JO.06\*:n/a; SM.19\*:n/a;  
VO.16:114p; WS.95a\*:141





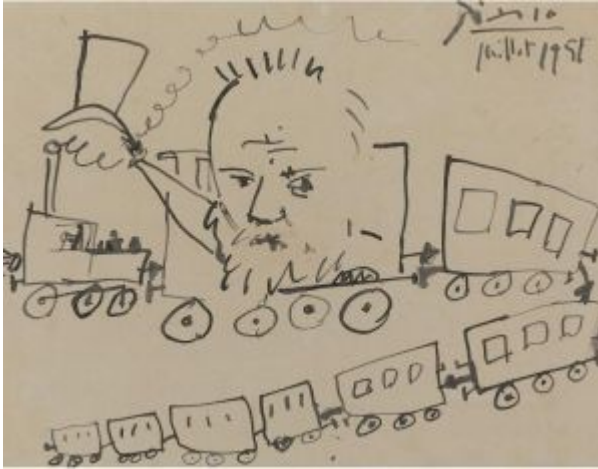
**Le mariage de Paul et Dominique Éluard (À Paul et Dominique Éluard).** Saint-Tropez. 15-June/1951. Color crayons. 32 x 24 cm. Christie's. #208, 5410, 10/21/05.

**OPP.51:075**

**Le petit clown.** Saint-Tropez. Summer/1951. Color crayons on paper. 25,5 x 20 cm. Artcurial. #3, 06/27/05. Formerly Geneviève Laporte Collection.

**OPP.51:055;** AS.89:37p; DO.07\*:203; PA.89c\*:n/a; PA.96c\*:12





**Victor Hugo et le voyage.** Vallauris. [12]-  
July/1951. Pen & ink on paper. 21,3 x 27 cm.  
Sotheby's. #529, N08241, 11/08/06.

**OPP.51:160**

**Projet d'affiche.** Vallauris. 12-July/1951. Brush & ink  
on paper. 65,5 x 50,4 cm. Sotheby's. 2022. Formerly  
Omer Tiroche Collection; Sotheby's. #668, L16005,  
02/05/16; Marina Picasso Collection.

**OPP.51:382;** KU.99\*:n/a





**Projet d'affiche à Vallauris.** Vallauris. 12-July/1951. Brush & ink on paper. 65,5 x 50,4 cm. Sotheby's. #311, L20004, 02/05/20. Formerly Marina Picasso Collection.

**OPP.51:429**



**Projet d'affiche.** Vallauris. [12-July]/1951. Brush & ink on paper. 66 x 50,5 cm. Sotheby's. #22, L20010, 06/18/20. Formerly Marina Picasso Collection.

**OPP.51:435**





**organdi myosotis ... (2)**. Vallauris. 18-July/1951. Ink. S/U.  
Musée Picasso, Paris.

**OPP.51:164**; CW.89:333p

**Deux dames japonaises dans un intérieur**. Vallauris. 19-July/1951. India ink. [65,5 x 50,5] 68 x 45,8 cm. Christie's. #153, 2845, 05/07/14.

**OPP.51:121**; PP.51:039; AR.57\*:79;  
GL.81\*:8s; JL.66\*:149







**Deux Japonaises dans un intérieur.** Vallauris. 19-July/1951. India ink & wash. 50,5 x 65,5 cm. Private collection. Formerly James Goodman Gallery, NY. 2008.

**OPP.51:244**; CC.01\*:47p

**Couple à l'oiseau (Pour Henriette Gomes).** Vallauris. 21-July/1951. Pen & black ink on paper. 22,8 x 31,8 cm. Christie's. #688, 6062, 12/09/98.

**OPP.51:294**





**Poème en collier.** Saint-Tropez. 23-July/1951. Pencil on paper. 32,5 x 25,1 cm. Duhamel Fine Art. 2012. Formerly Geneviève Laporte Collection.

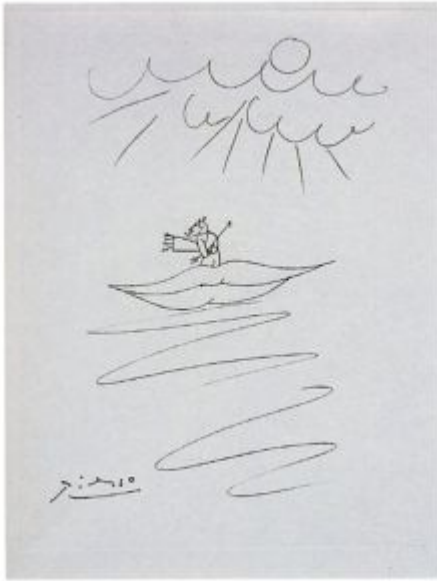
**OPP.51:291**; AO.97\*:94p; LE.95\*:n/a; PA.89c\*:35p; PA.96c\*:n/a

---

**Geneviève attachant sa sandale.** [Saint-Tropez]. [End-July]/1951. Engraving. 32,4 x 25,8 cm. Private collection.

**OPP.51:372**; MD.02:277p





**Vaque l'amour masqué.** Saint-Tropez. [End-July]/1951.  
Engraving. 32,5 x 25,7 cm. Private collection.

**OPP.51:374**; MD.02:289p

**Portrait de Geneviève à la jacquette rayée.** Saint-Tropez. 26-July/1951. Collage & ink on paper. 32 x 24 cm. Geneviève Laporte Collection.

**OPP.51:076**; MD.02\*:274p





**Geneviève au tricot marin I.** Saint-Tropez. 27-July/1951. Blue ball point pen, lead pencil & color pencils on paper. 30,5 x 23,5 cm. Artcurial. #7, 06/27/05. Formerly Geneviève Laporte Collection.

**OPP.51:059**; AS.89:37p; MD.02\*:275p; PA.89c\*:n/a; PA.96c\*:4



**Geneviève au tricot marin II et à la montre.** Saint-Tropez. 27-July/1951. Charcoal on paper. 30 x 23 cm. Artcurial. #8, 06/27/05. Formerly Geneviève Laporte Collection.

**OPP.51:060**; AS.89:247p; MD.02\*:270p; PA.89c\*:n/a; PA.96c\*:5



**Geneviève au tricot marin III.** Saint-Tropez. 27-July/1951. Ball point pen. 31 x 24 cm. Artcurial. #9, 06/27/05. Formerly Geneviève Laporte Collection.

**OPP.51:061**; AO.97\*:90p; AS.89:247p; MD.02\*:284p; PA.89c\*:n/a; PA.96c\*:6



**Geneviève au tricot marin IV.** Saint-Tropez. 27-July/1951. Ball point pen on paper. 30,7 x 22,5 cm. Christie's. #55, 3505, 05/23/12. Formerly Duhamel Fine Art 2011; Artcurial. #10, 06/27/05; Geneviève Laporte Collection.

**OPP.51:062**; AO.97\*:91p; AS.89:247p; MD.02\*:282p; PA.89c\*:n/a; PA.96c\*:7



**Geneviève au tricot et à la feuille.** Saint-Tropez. 28-July/1951. Ball point pen on paper. 31 x 24,2 cm. Artcurial. #11, 06/27/05. Formerly Geneviève Laporte Collection.

**OPP.51:063**; AS.89:247p; MD.02\*:284p; PA.89c\*:n/a; PA.96c\*:8

---

**Profil de Geneviève (Pour Geneviève).** Saint-Tropez. 29-July/1951. Crayon on paper. 30 x 23 cm. Artcurial. #1, 06/27/05. Formerly Geneviève Laporte Collection.

**OPP.51:053**; AO.97\*:92p; AS.89:182p; BA.75\*:n/a; OY.90\*:63p; PA.89c\*:n/a; PA.96c\*:16







**L'Amour peintre (Pour Geneviève)**. Saint-Tropez. 29-July/1951. India ink on paper. 25,5 x 20 cm. Artcurial. #2, 06/27/05.

**OPP.51:054**; AO.97\*:89p; AS.89:174p; MD.02\*:281p; OY.90\*:60p; PA.89c\*:n/a; PA.96c\*:1

**Portrait de Geneviève aux taches noires**. Saint-Tropez. 29-July/1951. India ink on paper. [26 x 21] 26,8 x 20,9. Duhamel Fine Art. 2012. Formerly Artcurial. #4, 06/27/05; Geneviève Laporte Collection.

**OPP.51:056**; AS.89:247p; BA.75\*:n/a; OY.90\*:64p; PA.89c\*:16p; PA.96c\*:23; ZU.07a\*:n/a





**Le sphinx aux trois oiseaux.** Saint-Tropez. 29-July/1951. India ink on paper. 26 x 20 cm. Artcurial. #13, 06/27/05. Formerly Geneviève Laporte Collection.

**OPP.51:065**; AS.89:42p; OY.90\*:70p;  
PA.89c\*:n/a; PA.96c\*:24

**La toilette (Geneviève).** Saint-Tropez. 29-July/1951. India ink on paper. 25,2 x 19,5 cm. Artcurial. #15, 06/27/05. Formerly Geneviève Laporte Collection.

**OPP.51:067**; AO.97\*:93p; AS.89:247p;  
MD.02\*:280p; OY.90\*:72p; PA.89c\*:n/a; PA.96c\*:18





**Femme allongée.** Saint-Tropez. 29-July/1951. India ink on paper. 20,8 x 26,7 cm. John Szoke Editions. 2007. Formerly Geneviève Laporte Collection.

**OPP.51:201**

**L'amour au miroir.** Saint-Tropez. 29-July/1951. Black ink on paper. 26,8 x 20,9 cm. Duhamel Fine Art. 2012. Formerly Geneviève Laporte Collection.

**OPP.51:292;** BA.75\*:16; LE.95\*:16; OY.90\*:66p;  
PA.74d\*:n/a; PA.89c\*:18p; PA.96c\*:17





**[Le Soleil ébloui] [Autoportrait et Geneviève.** Saint-Tropez. 29-July/1951. India ink. 26 x 21 cm. Private collection.

**OPP.51:373**; MD.02:281p; PB.21:157

**Visage de femme.** Vallauris. 4-August/1951. Painted, incised & partially glazed ceramic; jug with long spout. 49,9 cm. Sotheby's. #12, L16781, 11/22/16.

**OPP.51:388**; LO.84b\*:7; LR.07\*:3





**Hibou.** Vallauris. 4-August/1951. Ink on paper. 36,2 x 27,9 cm. Treadway Gallery. #307, N/A, 08/08/21.

**OPP.51:470**

---

**Bourrache à la tête de femme.** Vallauris. 6-August/1951. Bourrache with enamel striations in blue, green & black on glazed white ground. 57,5 x 36 cm. Christie's. #898, 20990, 11/19/22. Formerly Marina Picasso Collection. (Inv 58678).

**OPP.51:282;** GS.85\*:109; TK.89b\*:7





**Centaure (Pour Lee et Roland Penrose).**

Vallauris. 19-August/1951. Color pencil on inside of the book Ramón Reventós, *Deux Contes*, 1948. 32,5 x 25,5 cm. Scottish National Gallery of Modern Art, Edinburgh. (Inv A 35 / 2 / RPL1/001). Purchased with assistance from The National Heritage Memorial Fund and The Art Fund 1994.

**OPP.51:351**; ED.07\*:52

**Minerve (Geneviève).** Paris. 20-August/1951. Ink on paper. 26 x 20 cm. Artcurial. #17, 06/27/05. Formerly Geneviève Laporte Collection.

**OPP.51:069**; AS.89:248p; OY.90\*:69p; PA.89c\*:n/a; PA.96c\*:26; RD.08\*:106p; RD.11\*:38







**Femme assise en tailleur (Geneviève Laporte) (II) (Jacint Reventós, Recordant el Doctor Reventós).** Paris. 23-August/1951. Etching, drypoint & scraper, edition 8. 14 x 10 cm. Fundació Palau, Caldes d'Estrac. (Inv 0000205). Also Artcurial. #12, 06/27/05l.

**OPP.51:025**; B.II:1837; Ba:888.2B; GC:147; AS.89:204p; GP.96:306p; MD.02\*:285p; OY.90\*:67p; PA.89c\*:204p; PA.96c\*:35

**La splendide chevelure (Geneviève).** Paris. 23-August/1951. Pen & India ink on paper. 32 x 24 cm. Nationalgalerie, Museum Berggruen, Staatlichen Museen zu Berlin. Formerly Geneviève Laporte Collection.

**OPP.51:122**; PP.51:040; BL.06\*:178p; BR.96\*:65; GB.14\*:93





**Le sourire (Geneviève)**. Paris. 23-August/1951. Pen & India ink on paper. 32 x 24 cm. Nationalgalerie, Museum Berggruen, Staatlichen Museen zu Berlin. Formerly Geneviève Laporte Collection.

**OPP.51:123**; PP.51:040a; BL.06\*:179p; BR.96\*:66; GB.14\*:94

**Femme assise en tailleur (I) (Geneviève Laporte)**. Paris. 23-August/1951. Drypoint & scraping. 14,4 x 9,5 cm. Musée Picasso, Paris.

**OPP.51:405**; Ba:888.1; MPP:2988





**Femme assise en tailleur (Geneviève Laporte)**. Paris. 23-August/1951. Canceled copper plate for *Femme assise en tailleur (Geneviève Laporte) (II)* (*Jacint Reventós, Recordant el Doctor Reventós*). 14,5 x 10 cm. Museu Picasso, Barcelona. Donation 1970.

**OPP.51:433**; MPB:70.665

**Femme assise en tailleur (Geneviève Laporte) (II)**. Paris. 23-August/1951. Scraping & drypoint. 14,4 x 9,9 cm. Musée Picasso, Paris. Dation 1979.

**OPP.51:474**; Ba:888.2; MPP:2989





**Geneviève a la cascade.** Paris. 25-August/1951. Etching on imperial japan and Chine papers, edition 84. 35,5 x 44,5 cm. Artcurial. #22, 06/27/05. Also Sotheby's. #133, L03161, 07/01/03.

**OPP.51:074**; AO.97\*:98p; AS.89:140p; CS.87\*:72p; MD.02\*:288p; OY.90\*:74p; PA.89c\*:n/a; PA.96c\*:40

**L'alphabet de Geneviève.** Paris. 26-August/1951. Crayon on paper. 30,5 x 23 cm. Artcurial. #14, 06/27/05. Formerly Geneviève Laporte Collection.

**OPP.51:066**; AS.89:236p; PA.89c\*:n/a; PA.96c\*:28





**Geneviève en mariée.** Paris. 29-August/1951. Crayon on paper. 30,5 x 23 cm. Duhamel Fine Art. 2012. Formerly Artcurial. #5, 06/27/05; Geneviève Laporte Collection.

**OPP.51:057**; AS.89:200p; BA.75\*:n/a; JR.91:342p; MD.02\*:280p; OY.90\*:69p; PA.74d\*:n/a; PA.89c\*:8p; PA.96c\*:17

---

**L'Odalisque (Geneviève).** Paris. 30-August/1951. Pencil on paper. 21,5 x 30 cm. Musée Picasso, Paris. Formerly Artcurial. #6, 06/27/05; Geneviève Laporte Collection.

**OPP.51:058**; MPP:2005.3; AS.89:162p; MD.02\*:291p; OY.90\*:65p; PA.89c\*:n/a; PA.96c\*:32; PD.06\*:283p





**Le songe (Geneviève)**. Paris. 31-August/1951. Crayon on paper. 26 x 20 cm. Pieter and Olga Dreesmann Collection, London. (Inv A013). Formerly Artcurial. #16, 06/27/05; Geneviève Laporte Collection.

**OPP.51:068**; AS.89:158p; OY.90\*:59p; PA.89c\*:n/a; PA.96c\*:31

---

**Le vase hibou (Pour Geneviève)**. Paris. 1-September/1951. Crayon & ink on paper. 26 x 20 cm. Artcurial. #18, 06/27/05. Formerly Geneviève Laporte Collection.

**OPP.51:070**; AS.89:166p; PA.89c\*:n/a; PA.96c\*:14







**Hirondelle (Pour Geneviève)**. Paris. 1-September/1951.  
India ink on paper. 26 x 21 cm. Artcurial. #19, 06/27/05.  
Formerly Geneviève Laporte Collection.

**OPP.51:071**; AS.89:168p; PA.89c\*:n/a; PA.96c\*:15

---

**Le visage de la paix**. Vallauris.  
September/1951. Graphite on paper. 51 x  
66 cm. Musée Picasso, Paris. Dation 1979.

**OPP.51:141**; MPP:1416; PP.51:055;  
AH.01\*:n/a; BA.19c\*:180p; CP.95:79p;  
LU.93:402; PA.19d\*:273; PD.09:369p;  
TO.04\*:256





**La pause.** Paris. 2-September/1951. Pencil on paper. 32 x 24 cm. Simon C. Dickinson Ltd, London. Duhamel Fine Art. 2012; Geneviève Laporte Collection.

**OPP.51:293**; AV.95\*:n/a; BA.75\*:n/a; IM.18\*:n/a; LE.95\*:n/a; MD.02\*:281p; NY.15f\*:n/a; PA.74d\*:n/a; PA.89c\*:33p; PA.96c\*:17

---

**Lettre manuscrite à Max Pellequer.**  
Paris. 7-September/1951. Ink on paper.  
S/U. Piasa. #44, 2142, 02/15/24. Formerly  
Max Pellequer Collection.

**OPP.51:490**





**Le visage de la paix I.** Vallauris. 10-September/1951.  
Lithograph on wove paper. 24,3 x 18,6 cm. Christie's. #208,  
1322, 04/28/03.

**OPP.51:031**; M:202

**Paysage de Vallauris.** Vallauris. 20-September/1951.  
Pen & India ink on paper. 65 x 51 cm. Sotheby's. #462,  
L04010, 06/22/04. Formerly Christie's. #140, 1076,  
05/08/02.

**OPP.51:021**; PP.51:041; Z.XV:169



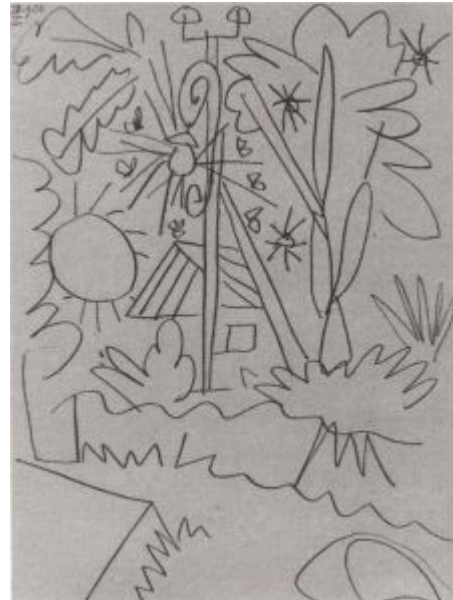


**Études pour Paysage nocturne I.** Vallauris. 20-September/1951. Pencil in sketchbook. 32 x 24 cm. Marina Picasso Collection. (Inv 10131-10139). Courtesy Galerie Jan Krugier, Geneva.

**OPP.51:124**; PP.51:042; GS.85\*:110.II

**Études pour Paysage nocturne II.** Vallauris. 20-September/1951. Pencil in sketchbook. 32 x 24 cm. Marina Picasso Collection. (Inv 10131-10139). Courtesy Galerie Jan Krugier, Geneva.

**OPP.51:125**; PP.51:043; GS.85\*:110.IV





**Études pour Paysage nocturne III.** Vallauris. 20-September/1951. Pencil in sketchbook. 32 x 24 cm. Marina Picasso Collection. (Inv 10131-10139). Courtesy Galerie Jan Krugier, Geneva.

**OPP.51:126**; PP.51:044; GS.85\*:110.VI

---

**Études pour Paysage nocturne IV.** Vallauris. 20-September/1951. Pencil in sketchbook. 32 x 24 cm. Marina Picasso Collection. (Inv 10131-10139). Courtesy Galerie Jan Krugier, Geneva.

**OPP.51:127**; PP.51:045; GS.85\*:110.VIII





**Études pour Paysage nocturne V.** Vallauris. 20-September/1951. Pencil in sketchbook. 32 x 24 cm. Marina Picasso Collection. (Inv 10131-10139). Courtesy Galerie Jan Krugier, Geneva.

**OPP.51:128**; PP.51:046; GS.85\*:110.IX

**Études pour Paysage nocturne VI.** Vallauris. 20-September/1951. Pencil in sketchbook. 32 x 24 cm. Marina Picasso Collection. (Inv 10131-10139). Courtesy Galerie Jan Krugier, Geneva.

**OPP.51:129**; PP.51:047; GS.85\*:110.X







**Études pour Paysage nocturne VII.** Vallauris. 20-September/1951. Pencil in sketchbook. 32 x 24 cm. Marina Picasso Collection. (Inv 10131-10139). Courtesy Galerie Jan Krugier, Geneva.

**OPP.51:130**; PP.51:048; GS.85\*:110.XI

**Études pour Paysage nocturne VIII.** Vallauris. 20-September/1951. Pencil in sketchbook. 32 x 24 cm. Marina Picasso Collection. (Inv 10131-10139). Courtesy Galerie Jan Krugier, Geneva.

**OPP.51:131**; PP.51:049; GS.85\*:110.XII



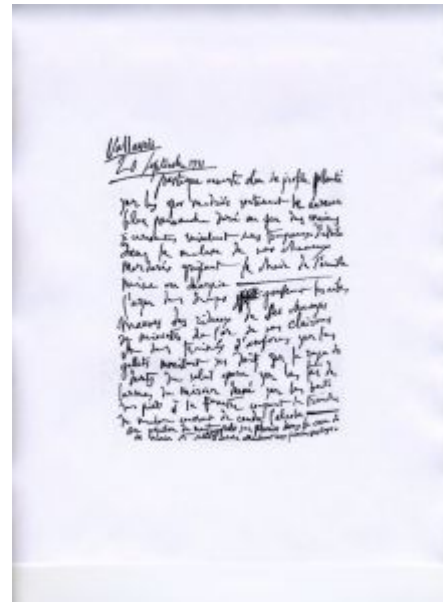


**Études pour Paysage nocturne IX.** Vallauris. 20-September/1951. Pencil in sketchbook. 32 x 24 cm. Marina Picasso Collection. (Inv 10131-10139). Courtesy Galerie Jan Krugier, Geneva.

**OPP.51:132**; PP.51:050; GS.85\*:110.XIII

**pasteque ouverte ....** Vallauris. 20-September/1951. Ink. S/U. Private collection.

**OPP.51:248**





**Études pour Paysage nocturne I.** Vallauris. 21-September/1951. India ink, wash & pen in sketchbook. 32 x 24 cm. Marina Picasso Collection. (Inv 10131-10139). Courtesy Galerie Jan Krugier, Geneva.

**OPP.51:133**; PP.51:051; GS.85\*:110.III



**Études pour Paysage nocturne II.** Vallauris. 21-September/1951. India ink, wash & pen in sketchbook. 32 x 24 cm. Marina Picasso Collection. (Inv 10131-10139). Courtesy Galerie Jan Krugier, Geneva.

**OPP.51:134**; PP.51:052; GS.85\*:110.III



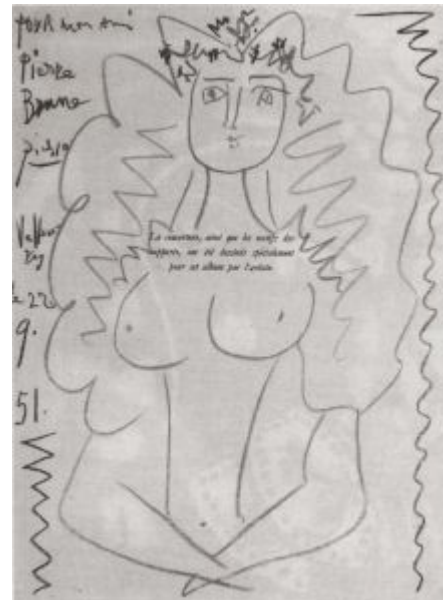
**Études pour Paysage nocturne III.** Vallauris. 21-September/1951. India ink & pen in sketchbook. 32 x 24 cm. Marina Picasso Collection. (Inv 10131-10139). Courtesy Galerie Jan Krugier, Geneva.

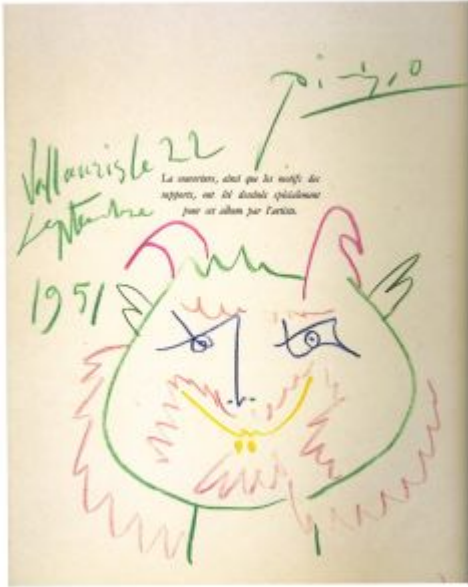
**OPP.51:135**; PP.51:053; GS.85\*:110.VII

---

**Corps de femme.** Vallauris. 22-September/1951. Colord crayons [Oic]. 37,7 x 27,7 cm. Sotheby's. #65, 03/20/96.

**OPP.51:137**; PP.51:053b





**Faune.** Vallauris. 22-September/1951. Color crayon on issue of Verve. S/U. Private collection.

**OPP.51:419**; PE.17\*:8pp

**Clair de lune à Vallauris.** Vallauris. Fall/1951. Oil on plywood. 137 x 104 cm. Smith College Museum of Art, Northampton, MA. Gift of Mrs. Werner E. Josten. (Inv SC1974.41). Formerly Galerie de l'Europe, Paris.

**OPP.51:136**; PP.51:053a; Z.XV:189; CT.23\*:28; MI.53\*:151; RP.60\*:188; WR.72\*:176p





**Avant-bras.** Vallauris. [Late-Summer] Fall 1951. Bronze. [56 x 10 x 8] 55,9 x 10,8 x 8,3 cm. The Metropolitan Museum of Art, NYC. (Inv 1992.178). Gift of Arthur Luce Klein and Luce Arthur Klein, 1992.

**OPP.51:212**; PP.51:073; WS:415; GT.10\*:89; TK.98a\*:99

---

**Crâne de chèvre.** Vallauris.  
Fall~Winter/1951. Wash. 50,5 x 66 [65,5]  
cm. Private collection.

**OPP.51:148**; PP.51:063; Z.XV:193;  
BS.55:220







**Paysage nocturne.** Vallauris. [Fall] 26-September/1951.  
Enamel on plywood. 146 x 114 cm. Private collection.

**OPP.51:138**; PP.51:054; Z.XV:166; AH.13\*:104; BS.55:289p;  
KG.71:40; KG.85:40; MI.53\*:152; RP.81:22.6

**Portrait de Marevna (Pour Marevna en souvenir).**  
Vallauris. 26-September/1951. Pencil. 26,5 x 21 cm.  
Christie's. #385, 04/04/89.

**OPP.51:139**; PP.51:054a









**Le visage de la paix II (Paul Éluard, Le visage de la paix).** Vallauris. 29-September/1951. Lithograph on Arches. 27 x 19,8 cm. Kunstmuseum Heidenheim. Also Kunstmuseum Picasso, Münster. (Inv 587.203).

**OPP.51:033**; B.I:687; GC:62; M:203; GP.96:310p;  
LU.93:339; MM.02\*:215p; RM.07\*:69p

**Le visage de la paix.** Vallauris. 29-September/1951. Lithograph. 27,9 x 22 cm. Christie's. #0183, 5470, 05/15/07.

**OPP.51:167**





**Étude pour La guenon et son petit.** Vallauris. [Early-October]/1951. Red wax crayon on paper. 27,4 x 21,4 cm. Christie's. #680, 20989, 11/19/22.

**OPP.51:477**

---

**Le babouin.** Vallauris. [October/1951]. Pen & brown ink on page of *Tériade, Verve VII* (10/51). 35,5 x 25,9 cm. Christie's. #191, 15972, 05/16/18.

**OPP.51:408**







**Chevalier en armure.** Vallauris. 3-October/1951. Ink in Willy Mucha's guest book. S/U. L'Indépendant Collection.

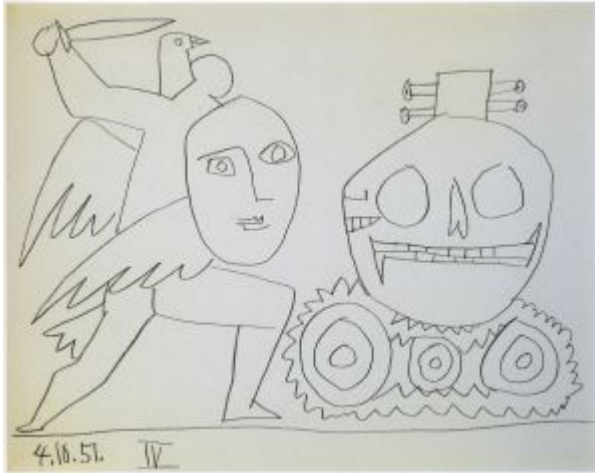
**OPP.51:418**; PE.17\*:69p

**Guerre et paix V.** Vallauris. 4-October/1951. Crayon on paper. 21 x 27 cm. Fundación Almine & Bernard Ruiz-Picasso para el Arte.

**OPP.51:306**; HO.16a\*:135p; PF.10\*:89







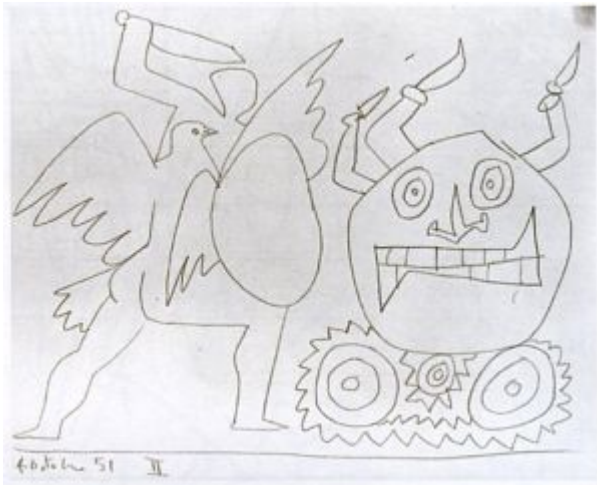
**Guerre et paix IV.** Vallauris. 4-October/1951. Pencil on paper. 21 x 27 cm. Fundación Almine & Bernard Ruiz-Picasso para el Arte.

**OPP.51:308**; LW.15\*:202p; PF.10\*:91

**Guerre et paix I.** Vallauris. 4-October/1951. Pencil on paper. 21 x 27 cm. Private collection.

**OPP.51:317**; TO.04\*:228





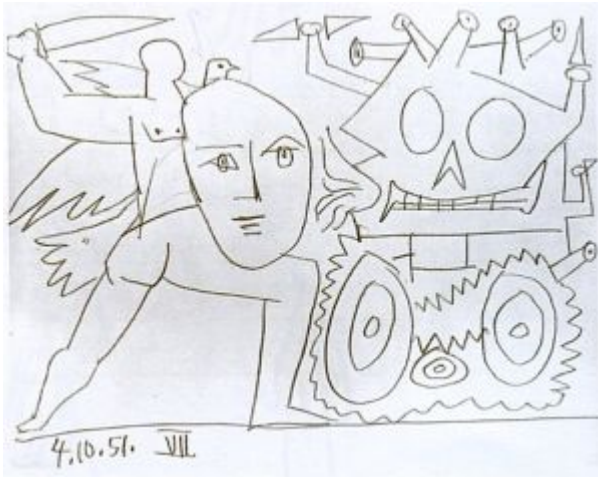
**Guerre et paix II.** Vallauris. 4-October/1951. Pencil on paper. 21 x 27 cm. Private collection.

**OPP.51:318**; TO.04\*:229

**Guerre et paix VI.** Vallauris. 4-October/1951. Pencil on paper. 21 x 27 cm. Private collection.

**OPP.51:319**; TO.04\*:230



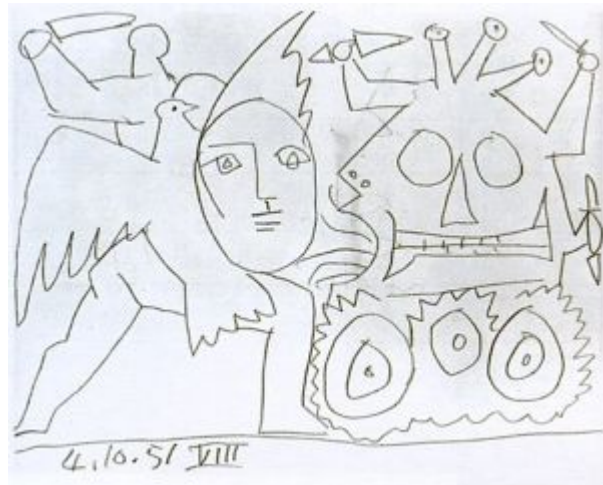


**Guerre et paix VII.** Vallauris. 4-October/1951.  
Pencil on paper. 21 x 27 cm. Private collection.

**OPP.51:320**; TO.04\*:231

**Guerre et paix VIII.** Vallauris. 4-  
October/1951. Pencil on paper. 21 x 27 cm.  
Private collection.

**OPP.51:321**; TO.04\*:232





**Guerre et paix IX.** Vallauris. 4-October/1951. Pencil on paper. 21 x 27 cm. Private collection.

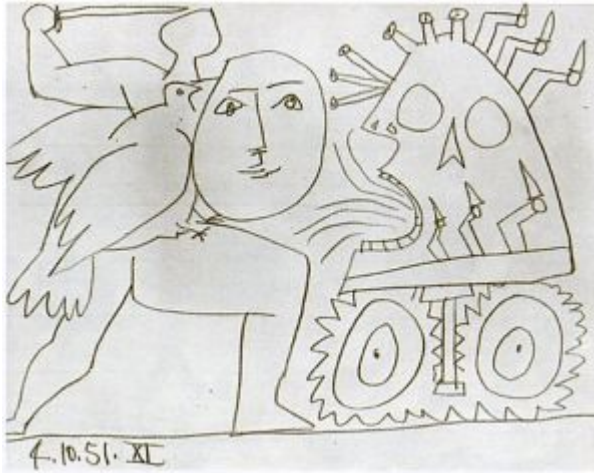
**OPP.51:322**; TO.04\*:233

---

**Guerre et paix X.** Vallauris. 4-October/1951. Pencil on paper. 21 x 27 cm. The Picasso Estate. (Inv 5250).

**OPP.51:323**; GU.00:92; LU.93:395; TO.04\*:234





**Guerre et paix XI.** Vallauris. 4-October/1951.  
Pencil on paper. 21 x 27 cm. Private collection.

**OPP.51:324**; TO.04\*:235

**La guenon et son petit.** Vallauris. 4~6-  
October/1951 [~1952]. Ceramic ware, two  
toy cars, metal & plaster. [54] 56 x 34 x 71  
cm. Musée Picasso, Paris. Dation 1979.

**OPP.51:027**; MPP:342; PP.51:097;  
WS:463.I; BF.14:66p; CP.95:167p;  
GC.07:146p; GP.96:309p; IS.98:112p;  
LZ.06:51; MM.02\*:171p; MP.85:390;  
NC.10:71; PA.79a\*:330; RB.99:56p;  
UP.00:959; WS.94:97p; WS.95a:51p;  
WW.91:488p





**La guenon et son petit.** Vallauris. 4~6-October/1951 [~1952]. Bronze with brown patina [Cast 1955 after *La guenon et son petit*]. 53,3 x 33,3 x 52,7 cm. The Museum of Modern Art, NYC. (Inv 196.1956). Mrs. Simon Guggenheim Fund.

**OPP.51:168**; PP.51:097a; WS:463.II; AB.57\*:n/a; AH.13\*:111; AT.84:30; BA.03a\*:210; BS.55:249; DQ.74:152p; DT.78:57; FG.64:308p; FW.67\*:n/s; GC.96:257p; GL.53\*:n/a; HJ.83:40p; HJ.96:40p; HK.65:180p; HN.00\*:11; HS.69:10.5; IW.93:48p; JL.71:267p; JR.10\*:99p; JR.62\*:9.21; KB.01\*:144; LB.58:116p; LO.54a\*:n/a; LO.55a\*:n/a; LO.90d\*:n/a; MM.67:39p; MR.16\*:n/a; MS.00a:46p; NY.56b\*:n/a; NY.56h\*:n/a; PD.09:385p; PD.69:42p; PJ.14:10p; RP.81:24.1; TG.94\*:120; TH.75:189; TU.15\*:116; VK.97\*:131p; VO.16:112p; WC.62\*:38; WR.72\*:175p; WR.80\*:408p; WS.93\*:103

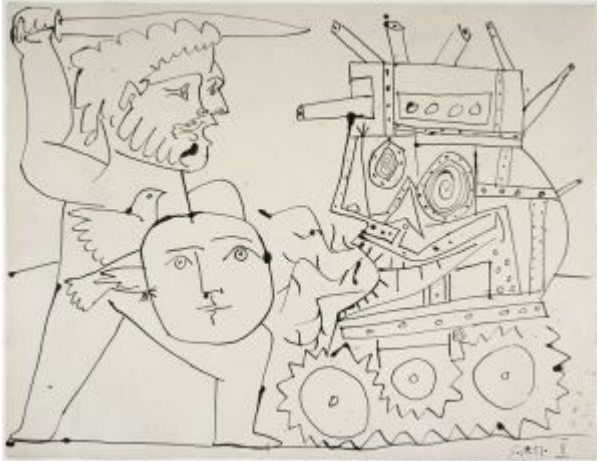
---

**Tête de guerrier pacifiste.** Vallauris. 5-October/1951. India ink with brush & feather. 50,5 x 60,5 cm. Museo Nacional Centro de Arte Reina Sofía, Madrid. (Inv DE01359). Formerly Marina Picasso Collection. (Inv 05270).

**OPP.51:142**; PP.51:056; GP.96:308p; MP.81\*:248







**Guerre et paix II.** Vallauris. 5-October/1951. Pen & India ink on paper. 50,5 x 65,5 cm. Musée Picasso, Paris. Dation 1979.

**OPP.51:143**; MPP:1405; PP.51:057; CK.04\*:107; JR.09:252p; LU.93:394; PA.07e\*:n/a; PA.19d\*:299; WS.93\*:96

---

**Guerre.** Vallauris. 5-October/1951. Pen & India ink on paper. 50,5 x 65,5 cm. Musée Picasso, Paris. Dation 1979.

**OPP.51:144**; MPP:1404; PP.51:058; AB.12\*:229p; LU.93:423; PA.07e\*:n/a; PA.19d\*:300; TO.04\*:237; WS.93\*:95



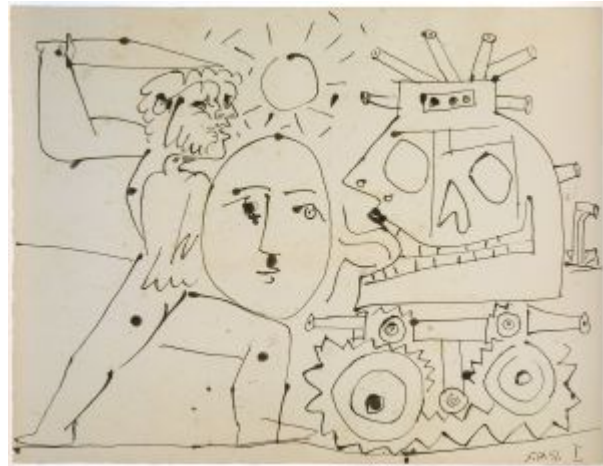


**Guerre et paix.** Vallauris. 5-October/1951. India ink & color pencil on paper. 50,5 x 65,5 cm. Fundación Almine & Bernard Ruiz-Picasso para el Arte.

**OPP.51:307**; PF.10\*:90; TO.04\*:236

**Guerre et paix.** Vallauris. 5-October/1951. India ink on paper. 50,5 x 65,5 cm. Private collection.

**OPP.51:309**; PF.10\*:92



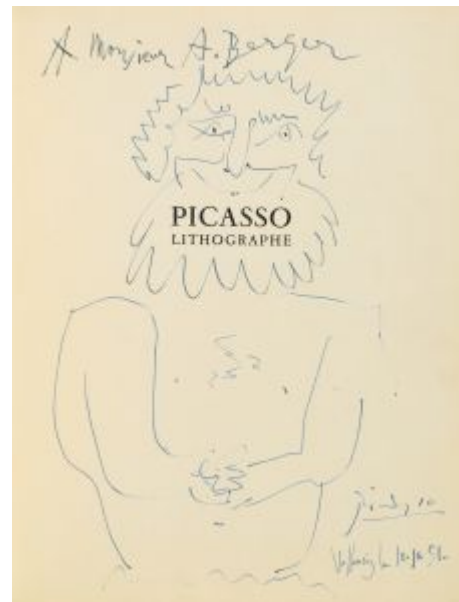


**Portrait d'Édouard Pignon.** Vallauris. 5-October/1951. India ink & wash on paper. 65,7 x 50,5 cm. Christie's. #229, 13664, 03/23/17.

**OPP.51:396**

**Faune souriant, les mains jointes (À Monsieur A. Berger).** Vallauris. 10-October/1951. Ink. 32,2 x 24,8 cm. Christie's. #258, 14240, 06/28/17. Formerly Christie's. #113, 14075, 10/21/16; Sotheby's. #176, PF1203, 05/15/12.

**OPP.51:290**





**Tête de guerrier pacifiste VII.** Vallauris. 15-October/1951. India ink on paper. [65,5 x 50,5] 66 x 50,8 cm. Evelyn Aimis Fine Art, Miami. 2018. Formerly Sotheby's. #86, N09727, 05/18/17; Marina Picasso Collection. (Inv 5269).

**OPP.51:305**; LO.84a\*:34; PF.10\*:93; TO.04\*:225

---

**Crâne de chèvre.** Vallauris. 19-October/1951. Pen & India ink on paper. 51 x 65,2 [62,5] cm. Musée Picasso, Paris. Dation 1979.

**OPP.51:145**; MPP:1406; PP.51:059; AM.67\*:168; BA.17\*:164p; GP.96:307p; HS.98\*:147; JB.92\*:129; JL.66\*:150; PD.06\*:284p; UW.84\*:60a





**Le suicide aux enfers.** Vallauris. 21-October/1951. Ink. S/U. Musée Picasso, Paris.

**OPP.51:165**; CW.89:336p



**Le suicide aux enfers.** Vallauris. 21-October/1951. Ink. S/U. Musée Picasso, Paris.

**OPP.51:166**; CW.89:337p



**Lettre adressée à Jaume Sabartés.** Vallauris. 23-October/1951. Color ink on envelope. S/U. Museu Picasso, Barcelona.

**OPP.51:444**

**Crâne de chèvre.** Vallauris. 29-October/1951. Pen, India ink & wash on paper. 50,7 x 66 cm. Musée Picasso, Antibes. On loan from Musée Picasso, Paris. Jacqueline Roque Picasso Collection. Dation 1990.

**OPP.51:263**; MPP:1990.90; CK.04\*:111; GR.90\*:86; HS.98\*:148







**Don Quichotte et Sancho Pança I (Affiche l'Exposition Hispano-américaine).** Vallauris. November/1951. Lithograph in black & ochre on Arches, edition 50. [47 x 39,3] 31 x 29 cm. Christie's. #211, 1322, 04/28/03.

**OPP.51:036**; B.I:689; M:207

**Don Quichotte et Sancho Pança II (Affiche l'Exposition Hispano-américaine).** Vallauris. November/1951. Lithograph. 66 x 50,5 cm. Sotheby's. #53, N09647, 10/23-24/17.

**OPP.51:402**; B.I:688; M:205





**Don Quichotte et Sancho Pança III (Affiche l'Exposition Hispano-américaine).** Vallauris. November/1951. Lithograph. 66 x 50,5 cm. Sotheby's. #76, N10015, 11/21/19.

**OPP.51:432**

**Nature morte au pichet.** Vallauris. 7-November/1951. Oil & chalk on plywood. 105 x 136,5 cm. Musée Picasso, Paris. Dation 1979.

**OPP.51:146;** MPP:205; PP.51:061; HP.65:95p; MP.85:179; PA.79a\*:327





**Lettre manuscrite à Max Pellequer.** [Vallauris].  
12-November/1951. Ink on paper. S/U. Piasa.  
#44, 2142, 02/15/24. Formerly Max Pellequer  
Collection.

**OPP.51:491**

**Don Quichotte et Sancho Pança IV (Affiche  
l'Exposition Hispano-américaine).** Vallauris. 20-  
November~22-December/1951. Lithograph on Arches.  
48,1 x 37,3 cm. Musée Picasso, Paris. (Inv BIB002852).  
Also Christie's. #210, 1322, 04/28/03.

**OPP.51:034;** B.I:1262; M:208; PF.10:39p; WC.62\*:36





**Don Quichotte, Sancho et la colombe.** Vallauris. 22-November/1951. Pencil on paper. 27 x 21 cm. Sotheby's. #471, N08197, 05/04/06.

---

**OPP.51:079**

**Lettre manuscrite à Max Pellequer.**  
[Vallauris]. 22-November/1951. Ink on paper. S/U. Piasa. #44, 2142, 02/15/24. Formerly Max Pellequer Collection.

---

**OPP.51:492**





**Le couple (Valentine Penrose, Dons des féminines).**

Vallauris. 27-November/1951. Etchings in black & colors on Chine volant, edition 37. 22 x 17 cm. Christie's. #240, 6399, 12/05/00.

**OPP.51:011**; B.I:690; Ba:890; GC:61; HN.00\*:77;  
JC.01a\*:202; PA.21f\*:194

---

**Le couple.** Vallauris. 27-November/1951. Etching  
[Alternate version of *Le couple (Valentine Penrose, Dons des féminines)*]. 21,7 x 16,8 cm. The Museum of Modern Art, NYC. (Inv 549.1953).

**OPP.51:421**





**Le couple.** Vallauris. 27-November/1951. Etching [Alternate version of *Le couple (Valentine Penrose, Dons des féminines)*]. 21,7 x 16,8 cm. The Museum of Modern Art, NYC. (Inv 999.1964.1). The Louis E. Stern Collection.

**OPP.51:422**

---

**Le couple.** Vallauris. 27-November/1951. Etching [Alternate version of *Le couple (Valentine Penrose, Dons des féminines)*]. 21,7 x 16,7 cm. The Museum of Modern Art, NYC. (Inv 999.1964.2). The Louis E. Stern Collection.

**OPP.51:423**







**Le couple.** Vallauris. 27-November/1951. Etching [Alternate version of *Le couple* (*Valentine Penrose, Dons des féminines*)]. 21,7 x 16,7 cm. The Museum of Modern Art, NYC. (Inv 999.1964.3). The Louis E. Stern Collection.

**OPP.51:424**

---

**Amours féminines (Le couple).** Paris. 27-November/1951. Drypoint. 21,8 x 17 cm. Musée Picasso, Paris. Dation 1979.

**OPP.51:473**; Ba:889; MPP:2987





**Deux caricatures I.** Vallauris. 28-November/1951. Ink. 27 x 21 cm. Private collection.

**OPP.51:171**; BA.03a\*:215

---

**Deux caricatures II.** Vallauris. 28-November/1951. Ink. 27 x 21 cm. Private collection.

**OPP.51:172**; BA.03a\*:216





**Deux caricatures III.** Vallauris. 28-November/1951. Ink. 27 x 21 cm. Private collection.

**OPP.51:173**; BA.03a\*:217

**Deux caricatures IV.** Vallauris. 28-November/1951. Ink. 27 x 21 cm. Private collection.

**OPP.51:174**; BA.03a\*:218





**Trois caricatures V.** Vallauris. 28-November/1951. Ink. 27 x 21 cm. Private collection.

**OPP.51:175**; BA.03a\*:219

---

**Deux caricatures VIII.** Vallauris. 28-November/1951. Ink. 27 x 21 cm. Private collection.

**OPP.51:176**; BA.03a\*:220





**Trois caricatures IX.** Vallauris. 28-November/1951. Ink. 27 x 21 cm. Private collection.

**OPP.51:177**; BA.03a\*:221

---

**Deux caricatures X.** Vallauris. 28-November/1951. Ink. 27 x 21 cm. Private collection.

**OPP.51:178**; BA.03a\*:222





**Deux caricatures XI.** Vallauris. 28-November/1951. Ink on paper. 27 x 21 cm. Private collection.

**OPP.51:179**; BA.03a\*:223

---

**Deux caricatures II.** Vallauris. 30-November/1951. Ink on paper. 32 x 24 cm. Private collection.

**OPP.51:180**; BA.03a\*:224







**Deux caricatures III.** Vallauris. 30-November/1951. Ink on paper. 32 x 24 cm. Private collection.

**OPP.51:181**; BA.03a\*:225

---

**Deux caricatures IV.** Vallauris. 30-November/1951. Ink on paper. 32 x 24 cm. Private collection.

**OPP.51:182**; BA.03a\*:226





**Deux caricatures V.** Vallauris. 30-November/1951. Ink on paper. 32 x 24 cm. Private collection.

**OPP.51:183**; BA.03a\*:227

---

**Deux caricatures VI.** Vallauris. 30-November/1951. Ink on paper. 32 x 24 cm. Private collection.

**OPP.51:184**; BA.03a\*:228





**Deux caricatures VII.** Vallauris. 30-November/1951. Ink on paper. 32 x 24 cm. Private collection.

**OPP.51:185**; BA.03a\*:229

---

**Deux caricatures VIII.** Vallauris. 30-November/1951. Ink on paper. 32 x 24 cm. Private collection.

**OPP.51:186**; BA.03a\*:230





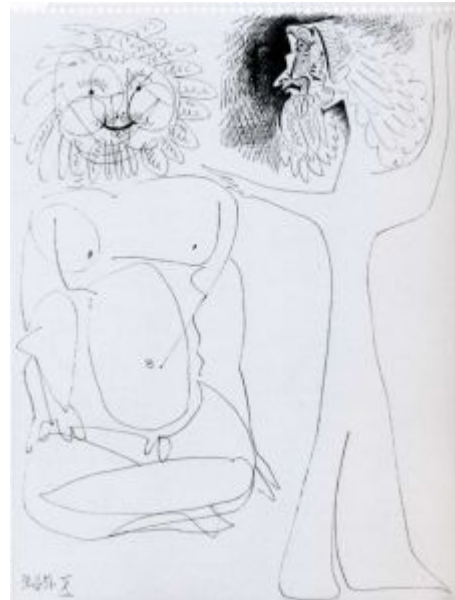
**Deux caricatures IX.** Vallauris. 30-November/1951. Ink on paper. 32 x 24 cm. Private collection.

**OPP.51:187**; BA.03a\*:231

---

**Deux caricatures X.** Vallauris. 30-November/1951. Ink on paper. 32 x 24 cm. Private collection.

**OPP.51:188**; BA.03a\*:232





**Deux caricatures XI.** Vallauris. 30-November/1951. Ink on paper. 32 x 24 cm. Private collection.

**OPP.51:189**; BA.03a\*:233



**Deux caricatures XII.** Vallauris. 30-November/1951. Ink on paper. 32 x 24 cm. Private collection.

**OPP.51:190**; BA.03a\*:234



**Deux caricatures XIII.** Vallauris. 30-November/1951. Ink on paper. 32 x 24 cm. Private collection.

**OPP.51:191**; BA.03a\*:235



**Deux caricatures XIV.** Vallauris. 30-November/1951. Ink on paper. 32 x 24 cm. Private collection.

**OPP.51:192**; BA.03a\*:236





**Deux caricatures XV.** Vallauris. 30-November/1951. Pen & ink on paper. [32 x 24] [31,8 x 23,7] 31,7 x 24,1 cm. Sotheby's. #43, N09727, 05/18/17. Formerly Marina Picasso Collection. (Inv 5156).

**OPP.51:170**; BA.03a\*:214; FB.13\*:n/a; JR.93\*:83

**Le visage de la paix VIII.** Vallauris. 1951. Engraving [After *Le visage de la paix (VIII)*]. 28,3 x 22,6 x 1 cm. Archives municipales, Ivry-sur-Seine. (Inv SO Z 1-184).

**OPP.51:414**; PA.19d\*:274





**Crâne de chèvre.** Vallauris [Paris]. 20-December/1951. Charcoal & pencil on paper. 50,7 x 66 cm. Private collection. Courtesy Phyllis Harris Fine Arts, New York. Formerly Sotheby's. #346, N08197, 05/04/06; Marina Picasso Collection. (Inv 05727).

**OPP.51:017**; PP.51:060; CP.95:133p;  
JR.12\*:110p; MP.81\*:251; NY.83b\*:66;  
VE.81\*:301

---

**Crâne de chèvre.** Vallauris. 20-December/1951. Brush & ink & wash on paper. [50,5 x 66] 50,4 x 65,7 cm. Sotheby's. #214, L22004, 03/03/22.

**OPP.51:147**; PP.51:062; Z.XV:192





**Cheval et cavalier: Verve maquette de couverture.**

Vallauris. Winter/1951. Lithograph (Published as frontispiece of Verve, No. 25-26). 35 x 26,5 cm. Artcurial. #38, 4268, 10/19/22. Also Bonhams. #2111, 18686, 02/13/11.

**OPP.51:150**; PP.51:064a

**Tête d'homme (Pour Monsieur et Madame Chatagner).** Vallauris. 23-December/1951. Colored pencils on paper. 35,3 x 26,2 cm. Christie's. #149, 7736, 06/24/09.

**OPP.51:251**





**Les fumeurs.** Vallauris. 23-December/1951. Pen & India ink & wash & ink on paper. 50,5 x 66 cm. Hélène Bailly Gallery. Formerly Christie's. #208, 18138, 03/26/20.

---

**OPP.51:279**

---

**La lettre.** Vallauris. 23-December/1951. Brush & pen & India ink on paper. 50,5 x 66 cm. Christie's. #291, 10335, 02/05/15. Formerly Maya Widmaier Picasso Collection, Paris.

---

**OPP.51:363**





**Hommes jouant aux échecs.** Vallauris. 23-December/1951. Brush & pen & India ink on paper. 51 x 66 cm. Christie's. #292, 10335, 02/05/15. Formerly Maya Widmaier Picasso Collection, Paris.

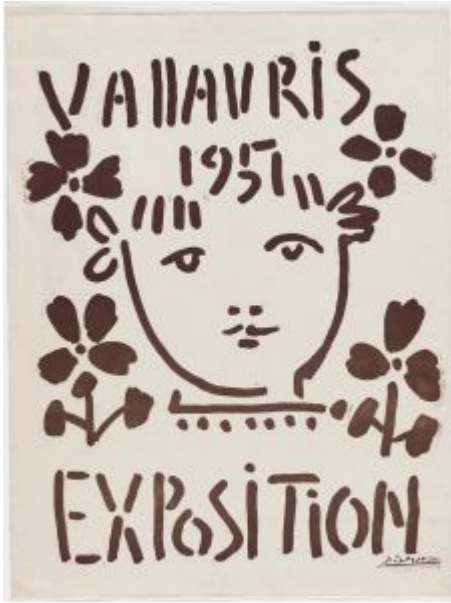
**OPP.51:364**

---

**Gros oiseau et visage noir.** Vallauris. 1951. White earthenware vase, decoration in engobes, knife engraved, painted in black & red, edition 25. [60,5] 55 x 46 x 38,5 cm. Sotheby's. #435, N07717, 11/02/01.

**OPP.51:016**; AR:118; BS.55:447p;  
CE.04\*:247; GR.74:693; IW.93:76p;  
LA.07\*:n/a; LE.21\*:81





**Vallauris 1951 Exposition.** Vallauris. 1951. Linoleum cut printed in dark green on smooth cream wove paper [Variant of *Vallauris 1951 Exposition*]. [56 x 45,7] 65,1 x 49,5 cm. The Museum of Modern Art, NYC. (Inv 172.1968). Given anonymously.

**OPP.51:022**; HK.65:148p; MG.00:6

**Canard pique-fleurs.** Vallauris. 1951. Painted & partially glazed earthenware pitcher, edition 50. 40 x 42 cm. Pieter and Olga Dreesmann Collection, London. also Museum Ludwig, Köln. ML 01671), Leihgabe since 2006. Sotheby's. #184, W06711, 07/11/06.

**OPP.51:037**; AR:117; GR.74:692; LE.21\*:257





**Festival mondial de la jeunesse et des étudiants pour la paix.** Cannes. [1951]. Print on fabric [After *Les quatre visages*]. [79 x 81] 79,5 x 77 cm. Musée d'Art et d'Histoire Paul Éluard, Saint-Denis. Also Christie's. #198, 5049, 10/25/06.

**OPP.51:049**; MPA:1988.5.2; CE.04\*:333; GU.00:94; LW.15\*:204p; PA.19d:219p; PA.21g\*:202p; PF.10\*:53

**Figure féminine.** Vallauris. 1951. Bronze. 8,7 cm. Private collection.

**OPP.51:098**; PP.51:086; WS:433







**Cavalière.** Vallauris. 1951. Tin-glazed earthenware painted in black & brown with scratched detail. 41,6 x 31,5 x 26,3 cm. Victoria and Albert Museum, London.

**OPP.51:151**; BS.12\*:118; DT.78:73; JW.01:49p

---

**Faune assis.** [Vallauris]. [1951]. White clay. 9,5 x 5 x 7 cm. Museo Picasso, Málaga. Gift of Bernard Ruiz-Picasso.

**OPP.51:153**; MPM:2.142B; WS:422.I; DP.20\*:153; GS.03:1.104; NC.17\*:118; TU.15\*:107





**Vase aux chardons et assiette de gâteaux (Nature morte au bouquet de fleurs)**. Vallauris. 1951. Clay, wood & metal. 82 x 59 x 30 cm. Fundación Almine & Bernard Ruiz-Picasso para el Arte.

**OPP.51:157**; WS:468.I; GS.03:2.40; JL.13\*:20;  
MG.04c\*:17; MG.23a\*:141p

**Le moine**. Vallauris. 1951. India ink. 26,5 x 35,5 cm. Private collection.

**OPP.51:169**; BA.03a\*:213





**Couverture du catalogue de l'exposition Homage to Picasso on his 70th Birthday.** Vallauris. 1951. Cover. 31 x 25 cm. Musée Picasso, Paris. (Inv BIB000878).

**OPP.51:203**

---

**Figure féminine.** Vallauris. 1951. Bronze. 9,2 cm. Private collection.

**OPP.51:205**; PP.51:085; WS:432.II





**Gros oiseau noir.** Vallauris. 1951. Incised, painted and glazed white ceramic. 55 cm. Sotheby's. #65, PF1116, 12/08/11.

**OPP.51:208**

---

**Tête de femme.** Vallauris. 1951. Bronze. 50,5 x 22 x 38 cm. Sotheby's. #16, N09567, 11/14/16.

**OPP.51:209;** PP.51:071; WS:412.II; GL.53\*:n/a; HP.64:73p





**Centaure.** Vallaury. 1951. Bronze. 27 x 29,5 x 9,5 cm. Private collection.

**OPP.51:210**; PP.51:072; WS:414.II; CE.04\*:345; JR.10\*:119p

---

**Main.** Vallaury. 1951. Bronze. 4,5 x 14,5 x 8,5 cm. Private collection.

**OPP.51:214**; PP.51:074; WS:416





**Main.** Vallauris. 1951. Bronze. 3,5 x 14 x 13,5 cm.  
Private collection.

---

**OPP.51:216**; PP.51:075; WS:417

---

**Avant-bras.** Vallauris. 1951. Bronze. 4,5 x  
24,5 x 8 cm. Private collection.

---

**OPP.51:218**; PP.51:076; WS:418





**Faune assis.** Vallauris. 1951. Bronze with brown patina. 10,2 x 7,5 x 5,5 cm. Christie's. #357, 17660, 11/12/19.

**OPP.51:220**; PP.51:077; WS:419.II; JR.10\*:149p

---

**Faune assis.** Vallauris. 1951. Bronze. 9,3 x 5 x 6,8 cm. Nasher Sculpture Center, Dallas, TX. (Inv 1985.A.13). Raymond & Patsy Nasher Collection, Dallas, TX.

**OPP.51:225**; PP.51:078; WS:420; KH.74\*:n/a; MI.18\*:n/a







**Faune assis.** Vallauris. 1951. Bronze. 9,7 x 7,5 x 8 cm.  
Private collection.

**OPP.51:226**; PP.51:079; WS:421

---

**Faune assis.** Vallauris. 1951. Bronze. [7,5 x 5,5] 9,6cm. Christie's. #301,  
14186, 05/16/17.

**OPP.51:227**; PP.51:081; WS:423.II





**Chèvre Gradiva.** Vallauris. 1951. Bronze. 7,5 x 7 x 3 cm.  
Private collection.

---

**OPP.51:228**; PP.51:082; WS:424

**Chèvre couchée.** Vallauris. 1951. Bronze.  
4,8 x 5,7 [6] cm. Sotheby's. #118,  
N08851, 05/03/12.

---

**OPP.51:229**; PP.51:083; WS:425





**Figure féminine.** Vallauris. 1951. Bronze. 8 cm. Private collection.

**OPP.51:230**; PP.51:084; WS:431.II

---

**Faune assis.** Vallauris. 1951. Bronze [Cast after *Faune assis*]. 9,3 x 6,5 cm. Private collection.

**OPP.51:231**; PP.51:080; WS:422.II





**Jeune femme (Pour Dominique).** Vallauris. 1951. Terracotta. 9,2 cm. Sotheby's. #472, L08008, 06/26/08.

**OPP.51:235**

**La grue.** Vallauris. 1951. Plaster, bucket, forks, metal objects, tap, wicker on wooden base. 76,5 x 29 x 43,5 cm. Musée Picasso, Paris. Dation 1979.

**OPP.51:239;** MPP:343; PP.51:095; WS:461.I; JL.14:62p; PA.79a\*:331; PD.09:399p; UP.00:958





**Femme lisant.** Vallauris. 1951. Plaster, wood, metallic objects, nails & screws. 16,4 x 36 x 13,5 cm. Musée Picasso, Paris. Dation 1979.

**OPP.51:240**; MPP:344; PP.51:096; WS:462.I; PA.79a\*:332; PD.09:398p; UP.00:960

---

**Poisson de profil.** Vallauris. 1951. Painted terracotta, edition 25. 32,3 cm. Christie's. #129, 5583, 12/01/09.

**OPP.51:252**; AR:132





**Adrian de Monluc, La Maigre L003 (Illustration).** Paris. 1951. Drypoint. 25,7 x 38,6 cm. Sotheby's. #379, PF6025, 10/11/06. Also Fine Arts Museums of San Francisco (1998.40.116.3).

**OPP.51:256;** B.I:700; Ba:879; GC:63.03; BO.00\*:82-83; GM.81\*:286

**Adrian de Monluc, La Maigre L001 (La Maigre, couverture aux armes de Monluc).** Vallauris. 1951. Drypoint on parchment. 42,8 x 25 cm. Fine Arts Museums of San Francisco. (Inv 1998.40.116.1). Gift of the Reva & David Logan Foundation.

**OPP.51:257;** B.I:698; Ba:877; GC:63.01; MPP:3560.1; BO.00\*:79; GM.81\*:284





**Adrian de Monluc, La Maigre L002 (Illustration).** Vallauris. 1951. Drypoint (double page) on Arches wove paper. 8 x 38,7 cm. Fine Arts Museums of San Francisco. (Inv 1998.40.116.2). Gift of the Reva & David Logan Foundation.

**OPP.51:258;** B.I:699; Ba:878; GC:63.02; BO.00\*:80-81; GM.81\*:285

**Adrian de Monluc, La Maigre L004 (Illustration).** Vallauris. 1951. Drypoint (double page) on Arches wove paper. 7,8 x 38,6 cm. Fine Arts Museums of San Francisco. (Inv 1998.40.116.4). Gift of the Reva & David Logan Foundation.

**OPP.51:259;** B.I:701; Ba:880; GC:63.04; BO.00\*:84-85; GM.81\*:287







**Adrian de Monluc, La Maigre L006 (Illustration).** Vallauris. 1951. Drypoint (double page) on Arches wove paper. 7,8 x 38,6 cm. Fine Arts Museums of San Francisco. (Inv 1998.40.116.6). Gift of the Reva & David Logan Foundation.

**OPP.51:260**; B.I:703; Ba:882; GC:63.06; BO.00\*:88-89; GM.81\*:289

**Adrian de Monluc, La Maigre L009 (Illustration).** Vallauris. 1951. Drypoint (double page) on Arches wove paper [After *Double suite des gravures pour La Maigre*]. 7,8 x 38,6 cm. Fine Arts Museums of San Francisco. (Inv 1998.40.116.8). Gift of the Reva & David Logan Foundation.

**OPP.51:261**; B.I:705; Ba:884; GC:63.09; BO.00\*:92-93; GM.81\*:292





**Adrian de Monluc, La Maigre L007 (Illustration).** Vallauris. 1951. Drypoint (double page) on Arches wove paper. 7,8 x 38,6 cm. Fine Arts Museums of San Francisco. (Inv 1998.40.116.10). Gift of the Reva & David Logan Foundation.

**OPP.51:262;** B.I:707; Ba:886; GC:63.07; BO.00\*:96-97; GM.81\*:290

**Bouquet de fleurs.** Vallauris. 1951 [1953~1954]. Bronze. 60 x 49,5 x 34 cm. Musée Picasso, Paris. Dation 1970. Also Christie's #27C, 3783, 11/12/15. Otto Gerson Gallery, NY; Mr. and Mrs Allan D. Emil Collection.

**OPP.51:265;** MPP:348; PP.51:099; WS:470; BS.55:241; CE.04\*:346; EG.66\*:31p; JR.62\*:9.25; KA.55\*:n/a; KZ.56\*:n/a; MA.08a\*:n/a; ME.82a\*:129; OS.56\*:n/a; PA.79a\*:338





**La petite chouette.** Vallauris. 1951. Utensils, metal, nails, screws & plaster. 26,5 x 18,5 x 14,5 cm. Musée Picasso, Paris. Dation 1979.

**OPP.51:266**; MPP:347; PA.79a\*:337

---

**Faunes.** Vallauris. 1951. Red earthenware, decoration in engobes. 26 x 22,5 x 16 cm. Musée Picasso, Paris. Dation 1979.

**OPP.51:270**; MPP:3723; CK.04\*:104; PA.08b\*:n/a; PA.79a\*:n/a; RS.88:189p





**Exposition Hispano-Américaine.** Vallauris. 1951. Lithograph. 59,1 x 45,7 cm. Sotheby's. #53, N09647, 10/23-24/17.

**OPP.51:276**; JR.09:246p; MG.00:53; MG.73:9

**Plus d'une semaine ... (Geneviève Laporte).** Vallauris. 1951. Engraving. 21,6 x 17,8 cm. Private collection.

**OPP.51:277**; MD.02:277p





**Grande vase hibou.** Vallauris. 1951. Fully glazed ceramic vase. 43 cm. Christie's. #310, 7976, 06/22/11.

**OPP.51:283**; AR:124; BS.08b\*:13

---

**Poisson de profil.** Vallauris. 1951. Painted & glazed ceramic plate. 25 x 32,5 cm. Sotheby's. #165, L11007, 06/23/11.

**OPP.51:284**





**Poisson de profil.** Vallauris. 1951. Fully glazed ceramic plate. 32,6 cm. Christie's. #102, 3692, 12/01/11.

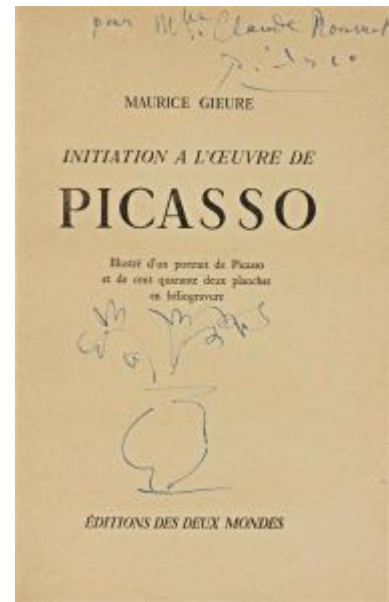
---

**OPP.51:285**

**Pot de fleurs, dédicace (Pour Mlle Claude Roumet).**  
Vallauris. 1951. Pen & ink on on frontispiece of M. Gieure,  
Initiation a l'oeuvre de Picasso. 21,3 x 13,6 cm. Christie's. #2,  
7873, 10/25/12.

---

**OPP.51:303**





**Vase aux chardons et assiette de gâteaux (Nature morte au bouquet de fleurs)**. Paris. [1951] 1953. Gilded bronze [Cast after *Vase aux chardons et assiette de gâteaux (Nature morte au bouquet de fleurs)*]. [82 x 59 x 30] 81 x 59 x 32 cm. Fundación Almine & Bernard Ruiz-Picasso para el Arte. (Inv 55847). Also Mr. and Mrs. Walter B. Ford, Grosse Point Farms, MI.

**OPP.51:311**; PP.51:102; WS:468.II; BA.18\*:185p; BE.09\*:88; JB.92:321p; JR.10\*:163p; JR.62\*:9.27; MI.01\*:153; MP.02\*:154; OS.56\*:n/a

**Le visage de la paix (Paul Éluard, Le Visage de la Paix)**. Vallauris. 1951. Lithograph [After *Le visage de la paix (III)*]. S/U. Musée d'Art et d'Histoire Paul Éluard, Saint-Denis. (Inv 94.07.128).

**OPP.51:325**; GC:62.a; TO.04\*:253







**Le visage de la paix (Paul Éluard, Le Visage de la Paix).** Vallauris. 1951. Lithograph [After *Le visage de la paix (IV)*]. S/U. Musée d'Art et d'Histoire Paul Éluard, Saint-Denis. (Inv 94.07.128).

**OPP.51:326**; GC:62.b; TO.04\*:253

**Le visage de la paix (Paul Éluard, Le Visage de la Paix).** Vallauris. 1951. Lithograph [After *Le visage de la paix (V)*]. S/U. Musée d'Art et d'Histoire Paul Éluard, Saint-Denis. (Inv 94.07.128).

**OPP.51:327**; GC:62.c; TO.04\*:253





**La paix.** Vallauris. 1951. Pencil on paper. 33 x 25 cm. Private collection.

**OPP.51:328**; LE.07\*:66; TO.04\*:255

**Le visage de la paix (Paul Éluard, Le Visage de la Paix).** Vallauris. 1951. Lithograph. S/U. Private collection.

**OPP.51:330**; GC:62.d





**Le visage de la paix (Paul Éluard, Le Visage de la Paix)**. Vallauris. 1951. Lithograph. S/U. Private collection.

**OPP.51:331**; GC:62.e

---

**Le verre**. Vallauris. 1951. Bronze. 23 x 12 x 22 cm. Private collection.

**OPP.51:335**; PP.51:101; WS:346.II; EC.09\*:16; TG.94\*:47





**Tête de chèvre de profil.** Vallauris. 1951.  
Terracotta, relief printing in black on ochre-tinted background under black varnish. 25 x 25 x 2 cm.  
Private collection.

**OPP.51:340**; JR.10\*:139p

**La dame et le chevalier.** Vallauris. [1951]. Mural  
(Photograph in *Le Patriote de Nice*, 10/04/52). S/U.  
Private collection.

**OPP.51:341**; GU.00:71





**Scène de pique.** Vallauris. 1951. Terracotta, painted with blue, black & white enamel. 38 x 32 cm. Gagosian Gallery, New York.

**OPP.51:343**

---

**Joueur de flûte (II).** Vallauris. 1951. White earthenware clay plate, decoration in oxides and white enamel [Variant of *Joueur de flûte (I)*]. 25 cm. Fundación Pablo Ruiz Picasso, Museo Casa Natal.

**OPP.51:344**; AR:128.II; PM.10:83p





**Singe.** Vallauris. [1951]. Crayon on paper. S/U. The Picasso Estate. (nv 6351r).

**OPP.51:346**; CP.95:169p



**Figure féminine.** Vallauris. 1951. White terracotta, molded & incised. 9,5 x 2,5 x 1,5 cm. Marina Picasso Collection.

**OPP.51:348**



**Abstraction géométrique.** Vallauris. 1951. Painted and incised ceramic; gus (olive oil vessel). 43 cm. Sotheby's. #131, L15007, 06/25/15.

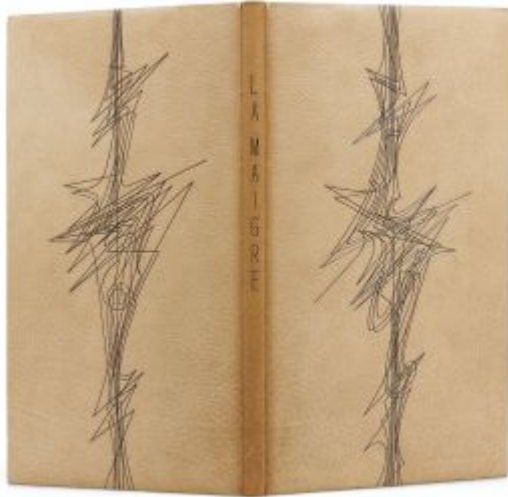
**OPP.51:349**

**Adrian de Monluc, La Maigre L005b (La femme au balai).** Vallauris. 1951. Drypoint (double page) on Arches wove paper. 25,7 x 38,6 cm. Fine Arts Museums of San Francisco. (Inv 1998.40.116.5).

**OPP.51:352**; GC:63.05b; BO.00\*:87; GM.81\*:288





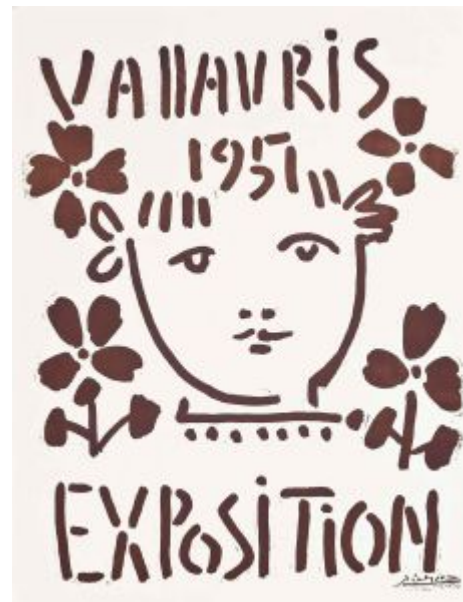


**Adrian de Monluc, La Maigre (Couverture).**  
Vallauris. 1951. Mixed media. 40,6 x 24,6 cm.  
Sotheby's. #100, PF1403, 06/19/14.

**OPP.51:353**

**Vallauris 1951 Exposition.** Cannes. 1951. Linoleum cut in brown, on partially watermarked Registres-Torpes paper [Variant of *Vallauris 1951 Exposition*]. 59,1 x 45,7 cm. Christie's. #64, 5377, 06/26/14.

**OPP.51:354**





**Poisson de profil.** Vallauris. 1951. Painted & glazed ceramic plate. 25,2 x 32,9 cm. Sotheby's. #217, L15004, 02/04/15.

---

**OPP.51:365**

---

**Joueur de flûte.** Vallauris. 1951. White earthenware ceramic plate with green glaze [Variant of *Joueur de flûte*]. 25 cm. Sotheby's. #71, L15162, 03/18/15.

---

**OPP.51:366**; AR:127.II





**Figure féminine.** Vallauris. 1951. Modelled & incised fired clay pendant. 10,5 cm. Sotheby's. #282, L21004, 03/19-26/21. Formerly Sotheby's. #570, L16005, 02/05/16.

**OPP.51:376**; WS:431.I; FB.13\*:n/a

---

**Visage-Colombe.** Vallauris. 1951. Incised plaster plaque. 9,4 cm. Sotheby's. #591, L16005, 02/05/16.

**OPP.51:377**





**Tête d'enfant, Paloma.** Vallauris. 1951. Gouache & oil on irregularly cut paper. 39,6 x 29 cm. Sotheby's. #642, L16005, 02/05/16. Formerly Marina Picasso Collection.

**OPP.51:380**; TK.00\*:108; WS.95a\*:135

---

**Poisson de profil.** Vallauris. 1951. Painted & glazed ceramic oval platter. 32,9 cm. Sotheby's. #651, L16005, 02/05/16. Formerly Marina Picasso Collection.

**OPP.51:381**





**Joueur de flûte.** Vallauris. 1951. Terracotta ceramic plate with white glaze [Variant of *Joueur de flûte*]. 23,2 cm. Christie's. #282, 11133, 02/05/16.

**OPP.51:383**; AR:127.III

---

**Joueur de flûte.** Vallauris. 1951. White earthenware ceramic plate [Variant of *Joueur de flûte*]. 24,5 cm. Christie's. #280, 11133, 02/05/16.

**OPP.51:384**; AR:127.IV





**Joueur de flûte.** Vallauris. 1951. White earthenware ceramic plate [Variant of *Joueur de flûte*]. 24,5 cm. Private collection.

**OPP.51:385**; AR:127.V

---

**Joueur de flûte.** Vallauris. 1951. White earthenware plate painted in blue with white enamel [Variant of *Joueur de flûte*]. 24,5 cm. Christie's. #22, 2523, 04/27/11.

**OPP.51:386**; AR:127.VI





**Joueur de flûte.** Vallauris. 1951. White earthenware ceramic plate [Variant of *Joueur de flûte*]. 24,5 cm. Private collection.

**OPP.51:387**; AR:127.VII

---

**Portrait de femme (Pour Legrand).** Vallauris. 1951. Ballpoint pen on page of Christian Zervos, *L'oeuvre de Picasso*. 18 x 11,3 cm. Sotheby's. #363, L17004, 03/02/17. Formerly Omer Tiroche Collection.

**OPP.51:391**







**Lampe rubans.** Vallauris. [1951]. Sandstone, white terracotta turned, engraved & painted in engobes. 43 x 47 x 29 cm. Private collection.

**OPP.51:394**; CE.04\*:144

**Dessin préparatoire pour le Foulard de la paix.** Vallauris. [1951]. Lead pencil on paper. 76 x 75 cm. Private collection.

**OPP.51:395**; CE.04\*:60





**Scène médiévale.** Vallauris. 1951. Brush & ink on paper. 26,6 x 35,5 cm. Sotheby's. #102, N09727, 05/18/17. Formerly Marina Picasso Collection.

**OPP.51:399**; JR.93\*:86

---

**Insecte.** Vallauris. 1951. White clay, painted in engobes. 42,5 x 37 cm. Private collection.

**OPP.51:401**; MR.16\*:n/a





**Mot en espagnol de l'artiste à propos de Kahnweiler au dos d'une enveloppe.** Paris. 1951. Ink on envelope. S/U. Musée Picasso, Paris.

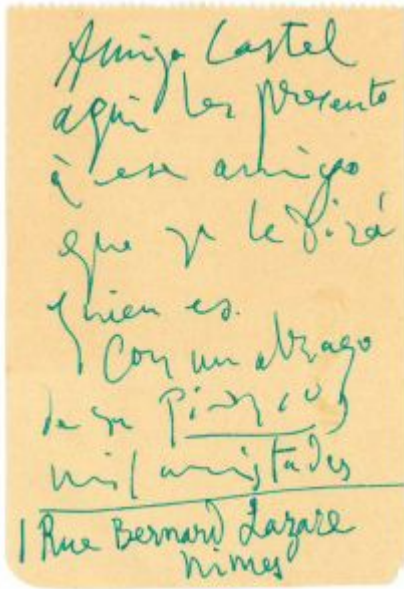
**OPP.51:404**

---

**Joueur de flûte (III).** Vallauris. 1951. Terre de faïence plate [Variant of *Joueur de flûte (I)*]. 24,8 cm. Sotheby's. #28, L17162, 04/10/17.

**OPP.51:407**; AR:128.III





**Note autographe à Castel "Con un abrazo de su Picasso mil amistades"**. Vallauris. [1951]. Green ink on paper. 10,7 x 7,4 cm. Private collection.

**OPP.51:409**

**Les quatre visages**. Cannes. 1951.  
Gouache on card laid down on canvas. 74 x 75 cm. Christie's. #175, 17155, 05/14/19.

**OPP.51:411**





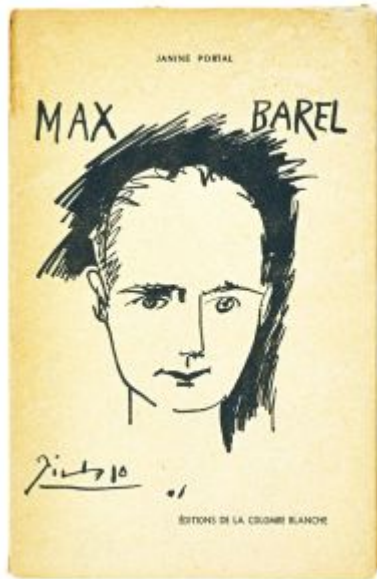
**Visage d'homme barbu.** Vallauris. 1951. Bronze with dark brown patina. 10 CM. Christie's. #212, 17155, 05/14/19.

**OPP.51:412;** WS:441

**Carreau de céramique édité pour le Festival de la Jeunesse et des étudiants pour la paix à Berlin.** Vallauris. 1951. Ceramic [After *Les quatre visages*]. 19,7 x 19,7 x 1 cm. Musée d'Art et d'Histoire Paul Éluard, Saint-Denis. (Inv 2018.0.46).

**OPP.51:416;** PA.19d\*:266



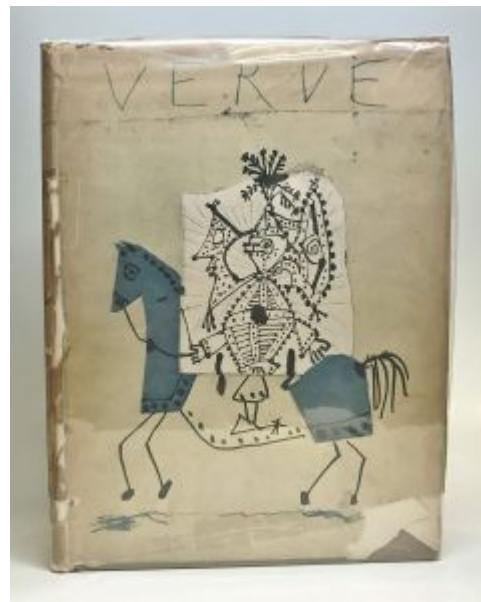


**Max Barel (Janine Portal, Max Barel).** Paris. [1951]. Print on paper. 22,5 x 14,5 cm. Musée de l'Armée, Paris. Bibliothèque. (Inv B 2429).

**OPP.51:417**

**Verve. Revue Artistique et Littéraire. Volume VII Nos. 25 et 26.** Paris. 1951. Print. 26,8 x 35,5 cm. Private collection.

**OPP.51:420; PE.17\*:137p**







**Poisson en profil.** Vallauris. 1951. Painted & glazed ceramic; oval plate. 32,1 cm. Sotheby's. #347, N10148, 11/13/19.

**OPP.51:425;** FY.14\*:n/a

**Poisson en profil.** Vallauris. 1951. Painted & glazed ceramic; oval plate. 32,1 cm. Sotheby's. #348, N10148, 11/13/19.

**OPP.51:426**







**Portrait de Geneviève à la jacquette rayée.** Saint-Tropez. [1951]. Lithograph [After *Portrait de Geneviève à la jacquette rayée*]. 38 x 28 cm. Plazzart, Paris.

**OPP.51:427**

---

**Double suite des gravures pour La Maigre.** Vallauris. 1951. Drypoint. 32,5 x 54 cm. Christie's. #252, 18401.

**OPP.51:428**





**Figure féminine.** Vallauris. 1951. Modelled & incised ceramic. 10 cm. Sotheby's. #130, L20005, 02/19/20. Formerly Marina Picasso Collection.

**OPP.51:430**; WS:384.I; KU.99\*:23

---

**Plat long a bord festonne (Corrida).**  
Vallauris. 1951. Ceramic plate. 29 x 65,5  
cm. Museum Ludwig, Köln. (Inv ML 01600).  
Schenkung 2001.

**OPP.51:431**





**Scène médiévale.** Vallauris. 1951. Pen & brush & ink on paper. 28,5 x 38 cm. Sotheby's. #37, L20010, 06/18/20. Formerly Marina Picasso Collection.

**OPP.51:436**

**Figure féminine.** Vallauris. 1951. Modelled & incised ceramic. 9,2 cm. Sotheby's. #54, L20010, 06/18/20. Formerly Marina Picasso Collection.

**OPP.51:437**





**L'enterrement de vie de garçon de Jean Ramié.** Vallauris. 1951. Detached painting on plaster. 60 x 48 cm. Espace Tajan. #10, 2121, 03/17/21.

**OPP.51:467**

**Nature morte aux poissons ou les jours maigres.** Vallauris. 1951. Detached painting on plaster. 92 x 62,5 cm. Galerie Gmurzynska, Zurich. Espace Tajan. #11, 2121, 03/17/21.

**OPP.51:468**





**Figure féminine.** Vallauris. 1951. Modelled & incised ceramic. 9,6 cm. Hélène Bailly Gallery. 2022. Formerly Sotheby's. #20, L21005, 04/14/21. Marina Picasso Collection.

**OPP.51:469;** WS:434.I

---

**Figure féminine.** Vallauris. 1951. Terracotta. 9 cm. Sotheby's. #45, N10944, 04/14/22. Formerly Marina Picasso Collection.

**OPP.51:475**





**Figure féminine.** Vallauris. 1951. Terracotta. 12 cm.  
Sotheby's. #17, L22009, 10/13/22. Formerly Marina Picasso  
Collection.

---

**OPP.51:476**

**Joueur de flûte.** Vallauris. 1951. Terre de  
faïence plate. 24 cm. Sotheby's. #73,  
L23163, 04/14/23.

---

**OPP.51:478**; AR:126-128



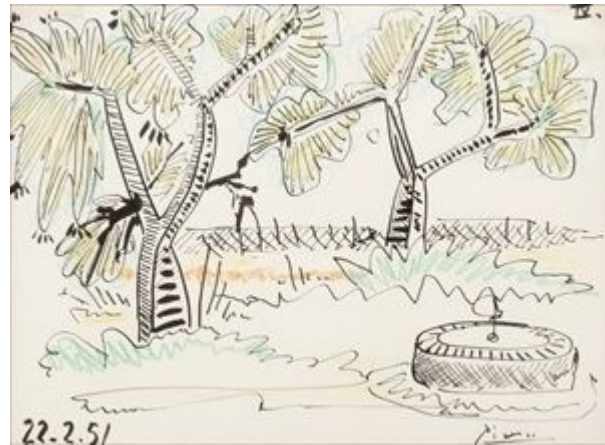


**Joueur de flûte.** Vallauris. 1951. Terre de faïence plate. 24,5 cm. Sotheby's. #43, L23163, 04/14/23.

**OPP.51:479**; AR:126-128

**Deux arbres et un puits IV.** [Vallauris]. 1951. Ink & colored pencil on paper. 21 x 27 cm. Mallet Japan. #142, 230518, 05/18/23.

**OPP.51:480**







**Carte de membre (Combattants de la Paix et de la Liberté).** Paris. 1951. Letterpress on cardboard [After *La colombe en vol IV*]. 8 x 12 cm. Dr. Stephan Handy Collection.

**OPP.51:481**

---

**Figure féminine.** Vallauris. 1951. Bronze. 9,4 cm. Private collection.

**OPP.51:482;** PP.51:087; WS:434





**Figure féminine.** Vallauris. 1951. Bronze. 9 cm. Private collection.

**OPP.51:483**; PP.51:088; WS:435

---

**Figure f'émnine.** Vallauris. 1951. Bronze. 9,7 cm. Private collection.

**OPP.51:484**; PP.51:089; WS:436





**Figure féminine.** Vallauris. 1951. Bronze. 11,5 cm. Private collection.

**OPP.51:485**; PP.51:090; WS:437

---

**Femme allongée.** Vallauris. 1951. Bronze [Cast after *Femme nue étendue*]. 13 x 5 cm. Private collection.

**OPP.51:486**; PP.51:091; WS:438





**Femme allongée.** Vallauris. 1951. Bronze. 11 x 3 cm. Private collection.

**OPP.51:487**; PP.51:092; WS:439

---

**Figure féminine.** Vallauris. 1951. Bronze. 9,7 cm. Private collection.

**OPP.51:488**; PP.51:092a; WS:384





**Vase à fleurs.** Vallauris. 1951. Bronze. 72,5 x 44 x 16 cm. Private collection.

**OPP.51:489**; PP.51:098; WS:467

---

**Poisson de profil.** Vallauris. 1951. White earthenware clay, decoration in engobes & oxides under glaze. 25,5 x 33,5 cm. Private collection.

**OPP.51:495**; AR:129; B.III:24





**Poisson de profil.** Vallauris. 1951. White earthenware clay, decoration in engobes & oxides under glaze. 25 x 33 x 2,3 cm. Private collection.

**OPP.51:496;** B.III:23

**Tête d'homme barbu.** Vallauris. 1951. Bronze with brown patina. [11] 11,5 cm. Galerie Jan Krugier, Geneva. (Inv JK 5835). Formerly Christie's. #203, 9518, 11/09/00.

**OPP.51:009;** PP.51:093; WS:454.II; PD.02\*:86





**Chouette aux traits.** Vallauris. 1951. White earthenware vase, decoration in oxides, knife engraved on white enamel, painted brown & black, edition 300. [29,5] 30 x 22,5 cm. Sotheby's. #437, N07717, 11/02/01.

**OPP.51:013**; AR:121

**Vase tripode.** Vallauris. 1951. White earthenware vase, decoration in oxides, engraved on white enamel, painted in blue & green, edition 75. [73] 75,5 x 23 cm. Sotheby's. #438, N07717, 11/02/01.

**OPP.51:014**; AR:125; LR.07\*:23;  
PD.09:394p







**Poisson de profil.** Vallauris. 1951. White earthenware platter, glazed, painted in blue, green & white. 25 x 30 cm. Sotheby's. #504, N07717, 11/02/01.

**OPP.51:015**; AR:131; B.III:25; GP.96:303p

---

**Hibou marron noir.** Vallauris. 1951. Painted & glazed white earthenware vase, edition 300. 29,5 x 18 cm. Sotheby's. #723, W01402, 10/24/01.

**OPP.51:018**; AR:123; HK.14\*:119p





**Vase à deux anses poisson.** Vallauris. 1951. White earthenware two-handled vase, painted in black, yellow, grey & blue. [22,5] 19,5 x 16 cm. Sotheby's. #439, N07717, 11/02/01.

**OPP.51:019**; AR:133.II; HG.71:179p

---

**Joueur de flûte.** Vallauris. 1951. White earthenware plate, decoration in oxides on white enamel, painted in blue, green & yellow, edition 40. 25 cm. Christie's. #143, 6683, 10/09/02.

**OPP.51:023**; AR:126; OW.13:90p





**Joueur de flûte (I)**. Vallauris. 1951. White earthenware plate, decoration in oxides on white enamel, painted in blue, green & yellow, edition 40 [Variant of *Joueur de flûte (II)*]. 25 cm. Christie's. #153, 6683, 10/09/02.

**OPP.51:024**; AR:128.I; B.III:22

**Araignées cosmiques**. Vallauris. [1949]~1951. Wax crayon & wash. 26 x 20,7 cm. Private collection. Formerly Sotheby's. #184, 10/07/88.

**OPP.51:030**; PP.51:066





**Poisson de profil.** Vallauris. 1951. Earthenware platter, glazed, painted in green, brown & black, edition 25. 25 x 33 cm. Sotheby's. #403, N07931, 10/31/03.

**OPP.51:040**; AR:131.II

**Tête de femme.** Vallauris. [1951]. Blue crayon on paper. 40,7 x 50,2 cm. Christie's. #141, 1371, 05/05/04.

**OPP.51:043**





**Chouette aux plumes.** Vallauris. 1951. White earthenware vase, decoration in oxides, knife engraved on white enamel, painted in brown & black, edition 300. [28,6] 30 x 22,5 cm. Private collection. Also Christie's. #954, 9940, 10/21/04.

**OPP.51:044**; AR:122

---

**Le hibou.** Vallauris. 1951. White ceramic vase painted in colors with enamel, edition 300. [29,8] 28 x 22,5 cm. Christie's. #200, 1368, 04/28/04.

**OPP.51:046**; AR:120





**L'arrivée de chevalier.** Cannes. 1951. Lithograph in green & red on wove paper, edition 350. 47,6 x 75 cm. Christie's. #147, 1481, 02/08/05.

**OPP.51:048**

---

**Femme-chouette.** Vallauris. 1951. White earthenware vase, engobe & paraffin decoration, white enamel, edition 500. 30 x 22,5 cm. Fogg Art Museum, Harvard University, Cambridge, MA. (Inv 2003.40.24). Also Sotheby's. #436, N07717, 11/02/01.

**OPP.51:051**; AR:119





**Tête de femme (Françoise).** [Vallauris]. 1951. Bronze. 53,6 x 35,7 x 18,8 cm. The Hirshhorn Museum and Sculpture Garden, Smithsonian Institution, Washington, DC. (Inv 66.4049). Gift of Joseph H. Hirshhorn, 1966. Also The Museum of Modern Art, NYC. Benjamin Scharps & David Scharps Fund.

**OPP.51:064**; PP.51:070; WS:411; BS.55:237; EG.66\*:32p; EL.69:178; FW.67\*:n/s; GL.53\*:n/a; HJ.83:40p; HJ.96:40p; JR.10\*:81p; JR.12\*:109p; LA.74:393p; LO.55a\*:n/a; MM.07\*:109; NY.56h\*:n/a; OS.56\*:n/a; TO.64\*:n/a; WC.62\*:39; WR.72\*:175p

**Joueur de flûte.** Vallauris. 1951. Painted & glazed white earthenware plate, edition 40. 25 cm. Sotheby's. #261, W05711, 10/26/05.

**OPP.51:073**; AR:127







**Adrian de Monluc, La Maigre L005a (La femme au balai)**. Paris. 1951. Drypoint (double page) on Arches wove paper. 25,7 x 38,6 cm. Sotheby's. #93, L03405, 12/09/03. Also Fine Arts Museums of San Francisco. (Inv 1998.40.116.5).

**OPP.51:254**; B.I:704; Ba:883; GC:63.05a; BO.00\*:86; GM.81\*:288

**Adrian de Monluc, La Maigre L008 (Illustration)**. Paris. 1951. Drypoint on japon, edition 74. 25,7 x 38,6 cm. Christie's. #176, 5020, 06/28/06. Also Fine Arts Museums of San Francisco. (Inv 1998.40.116.9).

**OPP.51:255**; B.I:706; Ba:885; GC:63.08; BO.00\*:94-95; GM.81\*:291





**Bourrache, décor feuilles.** Vallauris. 1951~1952. White earthenware ceramic vase, partially engraved, with colored engobe & glaze. 56,5 cm. Christie's. #330, 22051, 02/22-23/24.

**OPP.51:156**; LO.84b\*:10

---

**Petite chouette.** Vallauris. 1951~1952. Plaster, screws, nails & metal objects. 33,5 x 22,5 x 19 cm. Marina Picasso Collection. Courtesy Galerie Jan Krugier, Geneva.

**OPP.51:336**; WS:477.I; TG.94\*:123





**Femme nue étendue.** [Vallauris]. [1951~1952].  
Plaster. 3,5 x 13,5 [13] x 5 cm. Museo Picasso,  
Málaga. Gift of Christine Ruiz-Picasso.

**OPP.51:154**; MPM:1.65A; WS:438.I;  
GS.03:1.105; NC.17\*:124

---

**La grue.** Vallauris. 1951~1952. Painted bronze [Cast  
1952~1954 after *La grue*]. 75 x 29 x 43 cm.  
Nationalgalerie, Museum Berggruen, Staatlichen Museen  
zu Berlin. Formerly Marina Picasso Collection. (Inv  
55836). Also Museum Ludwig, Köln; Private collection,  
Courtesy Thomas Ammann Fine Art, Zürich.

**OPP.51:232**; PP.52:066; WS:461.IIc; BL.06\*:177p;  
BR.83a\*:461b; BR.96\*:67; BS.55:439p; GB.14\*:180;  
GL.53\*:n/a; HG.71:172p; JR.62\*:9.23; LO.54a\*:n/a;  
LY.53a\*:n/a; MI.53\*:209; MP.81\*:252; MP.83\*:189;  
PD.69:44p; RK.94\*:67; RP.67b\*:119; RP.67c\*:112;  
SD.05:224p; TG.94\*:121; TI.71:57; TK.64\*:n/a;  
TU.15\*:122; WO.92\*:64; WR.80\*:404p





**Nature morte: broc et figues.** Vallauris. 1951~1952. Plaster, wood & iron. [50 x 48 x 21,3] 32 x 48,5 x 21,5 cm. Marina Picasso Collection. (Inv 55835). Courtesy Galerie Jan Krugier, Geneva.

**OPP.51:288**; WS:460.I; JB.92:322p; MP.81\*:255; TG.94\*:124

**Tête de singe.** Vallauris. 1951~1952. Pencil on paper. 25,7 x 20,6 cm. Sotheby's. #52, N08968, 03/13/13.

**OPP.51:345**





**La grue.** Vallauris. 1951~1952. Bronze [Cast 1952~1954 after *La grue*]. 75 x 29 x 43 cm. Private collection.

---

**OPP.51:389**; WS:461.II

**Petite chouette.** Vallauris. 1951~1953. Bronze. S/U. Private collection.

---

**OPP.51:289**; PD.69:45p





**Portrait de Henri Martin.** Vallauris. [1951~1953]. Pen & India ink on paper. 32,2 x 21,1 cm. Musée d'Art et d'Histoire Paul Éluard, Saint-Denis. (Inv NA.3887). Formerly Sotheby's. #537, 12/02/87.

**OPP.51:140**; PP.51:054b; GU.00:150; PA.19d\*:228; PF.10\*:59; TO.04\*:276

---

**Vase de fleurs.** Vallauris. 1951~1953. Bronze [Cast after *Vase de fleurs*]. 73 x 49 x 42 cm. The Art Institute of Chicago. (Inv 1957.70). Gift of Mr. & Mrs. Victor K. Zucher. Also Milwaukee Art Museum. (Inv M1977.136). Gift of Mrs. Harry Lynde Bradley.

**OPP.51:198**; PP.51:100; WS:413.II; BR.83a\*:413.II; CS.56\*:n/a; EG.66\*:30p; GP.96:307p; HG.71:175p; HU.68\*:70; JB.92\*:134; JL.66\*:311; JR.62\*:9.26; LA.84\*:9; LO.55a\*:n/a; MI.01\*:150; MP.81\*:249; MP.83\*:88; MU.55\*:241; NY.57b\*:23; OS.56\*:n/a; RO.53\*:164; RP.67b\*:107; RP.67c\*:116; SD.13a\*:201; VE.81\*:303





**Nature morte: broc et figues.** Vallauris. 1951~1953. Painted bronze [Cast after *Nature morte: broc et figues*]. 29 x 48 x 21,3 cm. Morton G. Neumann Family Collection, Chicago.

**OPP.51:199**; PP.51:094; WS:460.II; BR.83a\*:460.II; BS.56c\*:50; GL.53\*:n/a; JB.92\*:135; JR.62\*:9.22; MP.81\*:255; MU.55\*:235; NY.53b\*:n/a; NY.53c\*:n/a; NY.55a\*:n/a; NY.57b\*:24; PH.58\*:42; WA.80b\*:92

**Petite chouette.** Vallauris. 1951, 1952 [~1953]. Painted bronze [Cast 1952]. 26 x 18,7 x 14,6 cm. The Hirshhorn Museum and Sculpture Garden, Smithsonian Institution, Washington, DC. (Inv 66.4045). Gift of Joseph H. Hirshhorn, 1966.

**OPP.51:242**; PP.51:103; WS:475; AU.89\*:48; GL.53\*:n/a; JR.62\*:9.19; NY.53b\*:n/a; NY.57b\*:n/a; TG.94\*:122; TU.15\*:120







**Vase de fleurs.** [Vallauris]. 1951~1953. Painted plaster, terracotta & iron. 76,5 x 51,4 x 43,8 cm. Nasher Sculpture Center, Dallas, TX. (Inv 1987.A.12). Raymond & Patsy Nasher Collection, Dallas, TX. Formerly Marina Picasso Collection. (Inv 55741).

**OPP.51:243**; WS:413.I; JB.92:321p; MP.81\*:249; SF.96b\*:n/a; TU.15\*:125

---

**Petite chouette.** Vallauris. 1951~1953. Plaster, ceramic, metal, shellac. S/U. Rijksmuseum Kröller-Müller, Otterlo.

**OPP.51:253**





**Femme debout (Avec Henri Laurens).** [Paris] Vallauris.  
[1921~] 1951~1953. Terracotta & India ink. 29,5 cm. Christie's.  
#11, 17191, 06/18/19. Formerly Sotheby's. #70, N09139,  
05/07/14; Sotheby's. #7, N08485, 11/03/08.

**OPP.51:275**; NY.89c\*:n/a; TF.00\*:11

---

**Portrait de Henri Martin.** Vallauris. 1951~1953.  
Lithograph on paper [After *Portrait de Henri Martin*]. 47,5  
x 33 cm. Musée d'Art et d'Histoire Paul Éluard, Saint-  
Denis. (Inv NA.3888).

**OPP.51:329**; TO.04\*:277





**L'arrosoir fleuri.** Paris. 1951~1953. Bronze [Cast in 1951~1953 after *L'arrosoir fleuri*]. 85,5 x 42 x 38 cm. Museum Ludwig, Köln. (Inv ML 01634). Schenkung 2001. Also Claude Ruiz-Picasso Collection.

**OPP.51:472**; WS:239.II; MI.01\*:152; ND.01\*:51; PF.10\*:26; SG.88\*:41; TU.15\*:124; WO.92\*:50

---

**Petit hibou.** Vallauris. 1951~1953. Modeled & painted terracotta. 34 x 26 x 37 cm. Private collection.

**OPP.51:493**; BA.23\*:225p





**Chouette à tête d'homme.** Vallauris. 1951~27-February/1953. White earthenware figure, decoration in engobes. [35 x 24,5 x 33] 33,5 x 34,5 x 25 cm. Musée Picasso, Paris. Dation 1979.

**OPP.51:267**; MPP:345; WS:403.IIIb; MA.99d\*:n/a; MM.02:50p; MP.85:484; PA.79a\*:335; TO.04\*:207a; WR.80\*:402p

---

**Chouette à tête de femme.** Vallauris. 1951~27-February/1953. White earthenware figure, decoration in engobes & pastel. [34,5 x 24,7 x 34,5] 33,5 x 34,5 x 25 cm. Musée Picasso, Paris. Dation 1979.

**OPP.51:268**; MPP:346; WS:403.IIIc; BF.14:84p; GP.96:311p; MM.02:50p; MP.85:485; PA.79a\*:336; QP.64:183p; TO.04\*:207b; WR.80\*:402p

